



Pioneer Catchment and Landcare Group Inc. ANNUAL REPORT 2010/11



Table of Contents

Chairman's Report 2010/11	3
Regional Landcare Facilitators Report 2010/11	5
1.1 Landcare Facilitator/ RCMW components	6
1.1.1 Coastal	6
1.1.2 Pests	6
1.1.3 Healthy Waterways	7
1.1.4 Peri-Urban	7
1.2 Mackay Regional Council funding	8
1.2.1 Workshops	8
1.2.2 Promotion/ displays	8
1.2.3 Working with stakeholders to develop/support projects	9
1.2.4 Support for local schools	10
1.2.5 Pioneer Riverbank, between Marian and Mirani - Restoration Project..	11
1.2.6 Environmental awareness days	12
1.3 Land for Wildlife	12
1.4 Funded Projects	13
1.4.1 Community Coastcare - Fish Kill Project	13
1.4.2 Community Action Grant - Slade Point Reserve	15
1.4.3 Hail Creek Mine Community Development Fund - Welcome to Waders	16
1.4.4 Don Myers Constructed Wetland monitoring	17
1.5 Membership	18
1.6 Financial Statement	19
1.7 Acknowledgements	20

Chairman's Report 2010/11

2010/11 was a good year. After working hard for nearly 2 years to secure funding in order to keep operating, I am very happy to report that we succeeded. We now have two officers, our Regional Landcare Facilitator (formerly the Coordinator) and our Project Officer delivering a range of projects in the community.

It was with regret that we received the resignation of Tessa in August 2010. Tessa McDonald had started with us on a 12 month contract and extended that for a further 3 months. Working with Tessa was a great pleasure and she was an excellent ambassador for Landcare and catchment management.

An agreement was signed with Reef Catchments Mackay Whitsunday Isaac and Hayley Glover was appointed Regional Landcare Facilitator, for a three year term, not long after Tessa finished working with us. Hayley had been our Project Officer for a year and we were very happy when RCMW offered her the position and she accepted. I would like to thank Hayley for holding the fort in between Tessa leaving and her appointment as Facilitator, and for her contribution in the new position. With the funding from RC MWI we have delivered the Peri-urban Program, worked on pest management projects and worked with RCMW to reinvigorate the Healthy Waterways program under the banner Healthy Waterways Alliance. There are also responsibilities under the Australian Government Regional Landcare Facilitator funding, in particular to promote Australian Government funding programs and work with the community to develop projects.

By September 2010 we had an agreement with Mackay Regional Council for \$50,000.00 to deliver a range of projects. We were also very pleased to negotiate with Council for the delivery of Land for Wildlife in our area. This, with other funded projects, enabled us to appoint a Project Officer and Dallas Milburn started work in November. Dallas has proven to be a great asset to our organisation, bringing with him skills that complement those of our Regional Landcare Facilitator.

The long wet season certainly impacted on our delivery of on ground works but did provide time for our officers, both new to their jobs, to plan. Since it stopped raining they have been very busy and I wish to compliment them on their commitment, organisational abilities and just in general for the way they approach their work. PCL's work depends on our ability to communicate, and both Hayley and Dallas are good communicators. This is evidenced in our newsletter, 11 per year, and the many flyers, information sheets, emails etc that emanate from our office.

During the year we worked on 8 projects funded from external sources, on top of the projects funded by Mackay Regional Council and the work required by RCMW. Tessa completed two of the projects (Transition Towns and Cats Claw Creeper) before she left. Hayley and Dallas have since completed 3 more (Fish Kill, Slade Point Reserve and the Mackay Regional Pest Management Group's Peri-urban) projects. Three projects, Welcome to Waders, Delivering skills and support to landholders throughout the Mackay Whitsunday Region through Regional Workshops and Don Myers Wetland Water Quality Monitoring are ongoing. I raise this to

emphasise how enterprising our officers have been in attracting project funding. We need to continue to be as enterprising in order to retain our Project Officer in the future. The position is secure for another 12 months because of the currently funded projects and a second year agreement with Mackay Regional Council, but projects planned now and grant applications written soon will be needed for next year. I am very happy to report that Dallas will be working with us for another 12 months from November.

Management Committee members have continued to contribute significantly to the group. Our Treasurer, Wendy Eiteneuer, was a tower of strength and has worked with officers to ensure smooth and efficient management of our finances. With so many projects funded from different sources, it is quite complicated. PCL signed an agreement with Mackay Region Pest Management Group to provide services in developing a regional weed book. Irene Champion and I did the work on a voluntary basis. I acknowledge Irene's contribution which in terms of the hours she spent was way above what our group was paid. However, it is a good project and we look forward to the book being published. Dave Hunter has continued to be an advocate for soil health and community composting, and I congratulate him on being appointed to the Queensland Recycling Organics Council. The formation of this group and the funding from the Queensland Government presents an exciting opportunity to advance the recycling of organic material in our region.

The Councillors on the Management Committee have all been very supportive and great advocates for our group. I would like to particularly mention Cr Karen May who was a great help with a number of issues when we were going through a very difficult period trying to secure our future. I take this opportunity to thank all the management committee members for their contribution during the year...it's been a good team to work with.

One way of thanking the Management Committee members is to provide opportunities for professional development. Members have attended the Qld Landcare Conference, a soil Health workshop and the Weeds Walkabout to Brisbane. Our officers also attended a range of professional development events throughout the year.

During the year I have represented the group on a number of occasions. I was the delegate of PCL on the Council's Natural Environment Advisory Committee and the Mackay Regional Pest Management Group, which I chaired until May this year. As I said on the beginning it has been a good year, and I thank all who have contributed. It is wonderful to know that once again our group is working in the community to make difference.



Margaret Lane
28/09/11

Regional Landcare Facilitators Report 2010/11

2010/11 saw Pioneer Catchment and Landcare Group (PCL) gaining in strength and activity, thanks to the contribution of our volunteers, staff and community. With regret PCL accepted Tessa McDonald's resignation who finished up in August 2010. Tessa did a wonderful job coordinating the group through a particularly challenging time, and we wish her all the best with the future. In November, we welcomed Dallas Milburn as project officer; Dallas has done wonderfully to manage a number of projects under our new funding relationship with Mackay Regional Council and it has been a pleasure working with him. Thank you Dallas. Warm thanks also to PCL's Management Committee for all their support and direction for the group's activities.

The 2010/11 year has brought some changes to PCL with the coordinators position becoming the Regional Landcare Facilitator funded by Reef Catchments (RC MWI) and the Australian Government, through the Regional Landcare Facilitator Program. This position is split 1/3 Regional Landcare Facilitator, 1/3 Reef Catchments support and 1/3 PCL core activities.

PCL has also partnered with Mackay Regional Council (MRC) to deliver a number of key projects in the region including continued support for landholders, support existing stakeholder relationships, funding to organise and attend key regional events, to enable officers to support local schools in sustainability programs and a key project to document environmental work on the Pioneer River. MRC is also funding the delivery of the Land for Wildlife program which we co-deliver with Sarina Landcare Catchment Management Association (SLCMA).

PCL continues to apply for small grants from the Federal and State governments and our regional NRM group to be able to be very active in delivering events and activities. During this period, PCL received funding from Rio Tinto's Hail Creek Mine to raise community awareness of shorebirds in the region.

Looking ahead, PCL hopes to continue to support landholders in our catchment in their natural resource management, particularly through projects such as the Peri-urban project. We will continue to be very active and to connect with new members of the community.

Hayley Glover
August 2011

1.1 Landcare Facilitator/ RCMW components

1.1.1 Coastal

The Mackay Coasts and Communities project was initiated to set a vision for the future of the Mackay coast and engage local communities in coastal management activities. The project provides a strategic and coordinated approach to managing our coast including developing local management plans to enable all organisations, community groups and local residents to work together to better use and attract resources, and achieve the best outcome for our coastal environments. The project is delivered in partnership by Mackay Regional Council and Reef Catchments. During 2010/2011 the Regional Landcare Facilitator has been working on the project with coordination of on-ground activities at Bucasia and Blacks Beach.

1.1.2 Pests

Through funding from the Australian Governments Caring for our Country program, Mackay Regional Pest Management Group in collaboration with Reef Catchments, Biosecurity Queensland, Mackay Regional Council and PCL are working to identify and eradicate Pond Apple infestations in the Mackay region.

A first step was to raise community awareness about the weed and its impact with the goal of actively involving the community in ongoing monitoring of control efforts. A field day was held in early 2011 to inform the community and develop identification skills through a live specimen within the infested areas. PCL has also had ongoing involvement in resource sharing days in eradication and monitoring efforts. Sections of the infestation have now been eradicated whilst ongoing monitoring occurs in the lower reaches and other nearby creeks.



Stakeholders participated in a Resource Sharing Day (left) to control an infestation of Pond Apple. Pond Apple fruits (right) can contain between 100-200 seeds. Images PCL.

1.1.3 Healthy Waterways

The regional Healthy Waterways program is undergoing revitalisation thanks to the formation of the Healthy Waterways Alliance. Directed by Reef Catchments, the alliance brings together the expertise of various organisations through Agriculture, Urban and Ecosystem Think Tanks. The Regional Landcare Facilitator has been involved as the community representative on the Ecosystem Think Tank. One great achievement this year has been sustaining the Healthy Waterways program (four creeks) without any additional funding. A special thank you is due to the Healthy Waterways volunteers and the commitment that they demonstrate to monitoring the health of our local streams.

1.1.4 Peri-Urban

A major project delivered in 2010/11 through Australian Government and Reef Catchments (MWI) was the Peri-urban Project, which focussed on delivering land management extension services to landholders in the Peri-urban Sector.

Participants in the project receive a site visit, a Land Management Plan (including a pest management plan) and an information pack containing relevant materials. The format for the Plans and the packs is standard across the catchment/Landcare groups of the region (Sarina Landcare Catchment Management Association and Whitsunday Catchment Landcare), and also includes land management conditions and resource condition indicators to benchmark properties and practices. The development of this project involved much closer collaboration between the Landcare groups and the regional NRM body.

PCL has value added to this program through promotion to raise awareness and gain participants in the project, particularly at regional events. This has been very successful, with a significant number of expressions of interest

This project has also enabled PCL to identify areas of interest and skills gaps amongst local landholders, and to refer landholders on to funding opportunities for example, Reef Catchments Reef Rescue program.



Landholders receive a site visit to discuss their property goals and help develop property management plans. Image PCL.

1.2 Mackay Regional Council funding

1.2.1 Workshops

The focus of the workshops was to raise awareness and increase educational opportunities for community members and school students on certain aspects of natural resource management within the Pioneer Catchment. PCL undertook two workshops within this time.

- Land for Wildlife Field Day - The event was held at a local LfW property with an emphasis on chemical free weed control. The landholders have done considerable work to manage weedy infestations through manual means. A presentation was also delivered on '*Snakes, identification, and their behaviour in the environment*'. This event was well attended and PCL received good public feedback.
- Schools Wetland Open Day - Held at the Wetland Walkabout, over 100 students discovered the fragile yet intriguing ecosystems to be found within a wetland environment, and a detailed look at the threats facing wetlands in the region. GBRMPA delivered workshops exploring the path of water through the catchment to its arrival in the wetlands, while PCL delivered workshops looking at macro-invertebrates that inhabit the wetland. PCL held a gold coin barbeque for students with all proceeds going to Wetland Walkabout.

1.2.2 Promotion/ displays

- Landcare Day in the Gardens 2010

Landcare Day in the Gardens 2010, themed “kids make a difference... in your backyard” showcased a number of local organisations and schools to promote the sustainability initiatives they are implementing.

Stall holders for the event included:

- SGAP – Native plant sale
- Shine from Shine's Fun Key Foods - Making colourful & healthy smoothies
- Luke Mathews from Mackay Community Gardens - Home composting
- MacBOCA - Birds of the lagoons
- PCL - Water weed display & macro invertebrate identification
- CVA - Seed planting
- Friends of the Mackay Botanical Gardens with Mayas bug display
- Carolyn Thompson from GBRMPA with the Sustainable Fishing Game and Climate Change Game



Stalls at the event (L-R) the Botanic Arts Group; Paul Andrews from the Rare Fruits Club Mackay; Luke Mathews explaining home composting.
Photo: PCL

- BSES May 2011

PCL joined with Whitsunday Catchment Landcare, Sarina Landcare Catchment Management Association & Reef Catchments Mackay Whitsunday Isaac to set up and man a display at the BSES Field Day in May. PCL spent a day talking with local landholders, discussing land management issues with attendees and other exhibitors as well as giving away over 120 locally native plants.



Dallas talking with a local landholder at the BSES Field days. Photo: PCL

- Greenmount Heritage Fair June 2011

PCL attended the very popular Greenmount Heritage Fair for the first time in June 2011. This event enabled PCL to interact with another audience and promote PCL projects and discuss land management issues.

- Palm & Cycad Fair June 2011

PCL attended the Palm & Cycad Fair for the first time in 2011 with overwhelming success. The Fair is a popular event with the community and allows PCL to discuss land management issues with attendees, promote the PCL's projects and upcoming land management workshops. The day was a great success and PCL hope to attend in the future.

- Finch Hatton Show 2011

PCL attended the Finch Hatton Show on June 19th and was once again very popular, with lots of community members that received trees last year coming to get more to plant. Over 400 local native trees were given away, enabling us to make contact with and discuss land management issues and PCL projects with a wide variety of landholders.

1.2.3 Working with stakeholders to develop/support projects

PCL has continued its close association with stakeholders when delivering NRM outcomes within the region. This cooperative approach to identify and manage priority issues in the environment is seen as a key step to achieving better NRM outcomes and utilising available resources in the most efficient manner. PCL has a good relationship with stakeholders in this regard and is committed to achieving optimum results. There are a number of regular events and resource sharing days in which were involved with.

Weed Identification Days - PCL regularly facilitated these events throughout the wet season (times of high growth), and receives the support of noxious weed

identification and management advice through Biosecurity Queensland and MRC Pest Officers.

PCL attended the Queensland Weed Symposium held in August, an information sharing event of the latest issues and up-to-date treatment methods from around the state. PCL also organised one of four regional fieldtrips centred on the Peri-urban environment titled '*From Small Weeds Big Weeds Grow*'.

PCL is a delegate on the Mackay Regional Pest Management Group (MRPMG), a group of stakeholders from around the region who work primarily on strategic and coordinated weed and pest animal control. PCL's delegate is also a member of the MRPMG's steering committee.

PCL is actively involved in the management of the Pond Apple outbreak in Reliance Creek (see 1.1.2). We regularly attend management meetings as well as resource sharing days aimed at eradicating known infestations and searching zones within the potential area of seed distribution.

1.2.4 Support for local schools

Funding for supporting local schools enables PCL to engage with local school students in an interactive and exciting way to increase their understanding of biodiversity, waterways and other catchment care issues. PCL has worked with a number of schools around the region in delivering content to schools or supporting teachers. This year, some of the schools and programs PCL have work with include:

- Homebush School – Hosted water quality and macro invertebrate session.
- Carlisle Christian College - Hosted water quality and macro invertebrate session.
- Slade Point School - Biodiversity walk through Slade Point Reserve.
- Reef Guardians Schools – Assisted Great Barrier Reef Marine Park Authority (GBRMPA) deliver the Future Leaders Eco Challenge 2010 at the Mackay Regional Botanic Gardens.
- Eimeo Rd State School – Biodiversity presentation in class to students.
- St. Frances Xavier School - Biodiversity walk through Slade Point Reserve.
- Mirani Primary School– Assistance with revegetation plot.
- Mackay North State High School - Hosted water quality and macro invertebrate session along Pioneer River.
- Hampden State School – Assistance with revegetation plot.
- Mercy College – Shorebird presentation and support for Mercy College Environmental Club.
- MacKillops Catholic Primary – Support for wetland rehabilitation funding application.
- Beaconsfield School – Support and attendance at 2011 “Enviro Conference”.



Students get involved in understanding our catchment. Photo: PCL

1.2.5 Pioneer Riverbank, between Marian and Mirani - Restoration Project

This project has been designed around the Pioneer River to give an insight into its history as a significant feature of the Pioneer Valley, previous revegetation works completed along its banks, and identifying areas suitable for future rehabilitation. The main area of focus of the riverbank has been between Marian and Mirani. Current outcomes during this period include:

- Develop a history of the riverbanks rehabilitation works along the Pioneer River and be able to present it in an interactive way that will be both beneficial and educational when presented to schools and through community engagement.
- Assess previous historic rehabilitation works, to identify any shortfalls/issues and be able to produce methods for more successful future programs.
- Identify current and developing issues along the riverbank, including suitable areas with community significance for rehabilitation.
- Facilitate a field trip along the river bank, discussing the above outcomes with interested community members, and highlighting developing issues such as weed infestation and bank erosion.



The Pioneer River just below Dumbleton Weir (left) and rehabilitation along the river near Marian (right). Images PCL.

1.2.6 Environmental awareness days

Environmental awareness days are designed to bring attention to common issues surrounding the regional environment, and engage the public through awareness and education. PCL has been involved in two events over the 2010/2011 period.

- Clean Up Australia Day - PCL oversaw a group of keen students from St Patrick's College converge on Riverside Drive to help in the nation wide clean up event. Twenty-two bags of general rubbish were retrieved and 11 bags of recycling, along with a range of large items including tyres, air conditioning units and gym equipment.
- Weedbusters Goose Ponds Event - PCL organised this event along an old rehabilitation plot along the Gooseponds Walk that contains a range of environmental weeds. Weed ecologist Peter Alden discussed identification, and basic management options, followed by a walk through an urban corridor discussing plants of general concern in this setting.



Weed ecologist Peter Alden in demonstration (left) and St Patrick's volunteers helping clean up Riverside Drive at Clean Up Australia Day (right). Images PCL

1.3 Land for Wildlife

Pioneer Catchment and Landcare Group and Sarina Landcare Catchment Management Association (SLCMA) are jointly delivering the Land for Wildlife (LfW) in the Mackay–Sarina region with funding from the Mackay Regional Council's Environmental Levy.

LfW started in Victoria in the 1980s and has spread throughout the country. It is a voluntary agreement that recognises the effort put in by individual landholders to manage and conserve parcels of land for the benefits of wildlife.

Under this funding PCL has delivered the following:

- Six (6) land management assessments;
- Six (6) property re-visits;
- Conduct a survey of 35 current Land for Wildlife Members.

In its initial year, the Land for Wildlife program has been a huge success with all 6 properties assessed receiving accreditation. PCL has been promoting the program

through newsletter articles and displays at local events which has generated the interest of a further dozen landholders.

Newly accredited properties receive a management plan to assist in the work efforts, subscription to quarterly newsletters, workshops on conservation based topics, and a sign to display on their property. The 2010/2011 period has seen the total area under voluntary protection in the Pioneer Catchment increased by 19.24ha.



New Land for Wildlife landowners. Photo: PCL

1.4 Funded Projects

1.4.1 Community Coastcare - Fish Kill Project

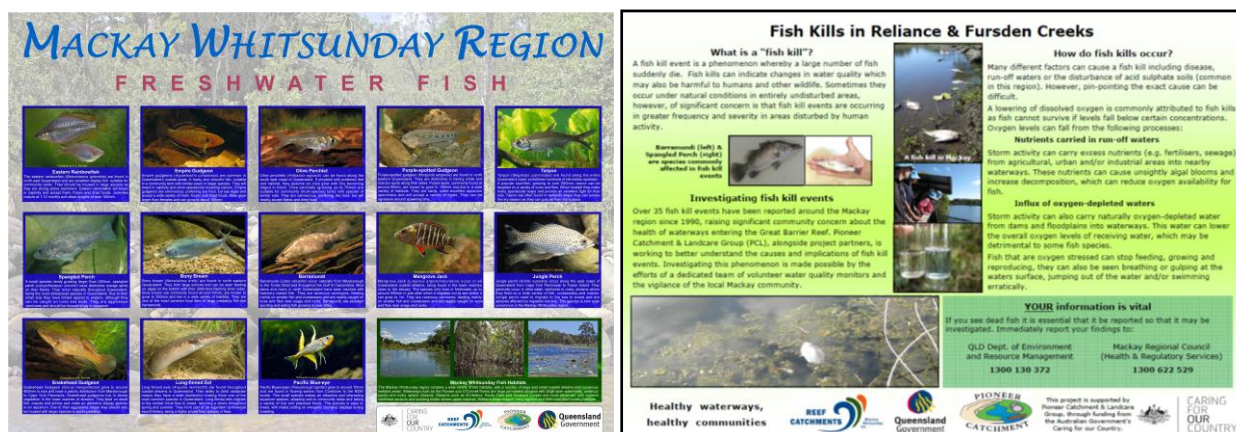
The fish kill was completed at the end of July 2011 and has significantly increased our knowledge of water quality processes. Despite no fish kill occurring within the study sites over the duration of the project, we have developed a greater understanding into the complexity of water quality processes in this region. To fully grasp the breadth of knowledge gained from this project it is best to refer to the project final report for a greater comprehensive analysis.

The project maintained a regular monitoring program which was greatly complimented and enhanced from the data collected under the Healthy Waterways program. The data was collected by a dedicated and experienced group of volunteers who helped to make this project a success. The complimenting of Healthy Waterways data has enabled greater analysis of water quality processes as a result.

The data collection period was maintained from March 2009 through to January 2011, during which time, no fish kill was reported to have occurred within either Reliance or Fursden Creek. Ten volunteers attended training workshops and carried out regular water monitoring along 9 sites (3x Fursden, 6x Reliance). The project also increased community awareness of fish kill incidents and the importance of reporting these to the appropriate agencies through the following activities:

- Various workshops: Water quality data collection procedures and fish identification training to volunteers (March 2009); Water weed identification and training to volunteers (April 2009); Data collection procedures and aquatic ecology training session (August 2010)

- The development of a native freshwater fish identification booklet (April 2009);
- Development of 2 fish kill posters and displays at regional events;
- Various radio interviews and media articles;
- Development of a comprehensive literature review and final report.



Posters were created to raise awareness of freshwater fish species found in the Mackay Whitsunday region and to educate the community on fish kills and the project.



Various training days have increased and engaged volunteers for the monitoring program and increased overall awareness on aquatic ecology to dedicated community members. Photo: PCL

Some major points we've learned from this project:

- DO concentrations in Reliance and Fursden Creeks are highly variable and these extreme values would be uninhabitable for fish survival.
- It appears that another factor, or another factor interacting with low dissolved oxygen may cause a fish kill as our results do not indicate alone that low DO causes a fish kill.
- The extreme rainfall variation between study years would likely explain the lack of a fish kill event over the study period.
- Fish community population structure varies over the duration of a wet season and this is related to variation in dissolved oxygen levels.

In addition, we've learned the lack of reporting of fish kill events is a significant contributor to the lack of information gathered around a fish kill event. The reasons for the lack of reporting are complex and may rise from fear of reprimand or lack of understanding around the importance of reporting a fish kill promptly.

Through this project we have undertaken significant community awareness raising activities and education in the hopes that greater awareness will result in more reporting of such events so that they can be investigated. We have achieved this through media articles, radio and television interviews, posters, training sessions and booklets. We are confident that the benefit of this education effort to the community will far outlive the duration of this project.

This project is sponsored by Pioneer Catchment & Landcare Group Inc. through funding from the Australian Government's Caring for our Country program.

1.4.2 Community Action Grant - Slade Point Reserve

Slade Point Reserve is a 73 hectare public Reserve in the Mackay region, containing a diverse system of flora and fauna through a range of wetland, littoral, and coastal ecosystems, representing both remnant and rehabilitated areas of vegetation that is increasingly troubled by urbanisation and weed infestation. This project is implementing aspects of the Slade Point Reserve Management Plan 2008-2018 through the development of educational resources, and by hosting working bees and events at the Reserve designed to engage and educate the community. All on-ground activities will restore native habitat and build community knowledge of the Reserve's ecological value.

Upon the completion of the project at the end of July 2011, PCL has delivered the following:

- Coordinated and delivered 5 community working bees;
- Developed school educational material, including a PowerPoint presentation and a reference booklet for plants in the vicinity of the Teal St entrance of the Reserve;
- Delivered 8 school educational sessions (4 in class and 4 visiting the Reserve), involving more than 180 children;
- Developed one rehabilitation plot with school children with 54 trees planted encompassing over 200m²;
- Widely promoted this project through a wide variety of media including over 6 local events, over 200 flyers were distributed to the Slade Point neighbourhood, and published a number of media articles;
- Contracted weed control works of over 90 hours of weed management of priority species of threatening and noxious weeds;
- Conducted two community information walks through the reserve focusing on localised native species and the threats to the accompanying ecosystems;
- Organised Conservation Volunteers Australia to undertake a range of activities throughout the reserve over a five day period.



PCL organised a community walk through Slade Point Reserve wetlands with Society for Growing Australian Plants member, Irene Champion (left). PCL worked with Conservation Volunteers Australia (right) on various weed control activities to enhance the natural values of Slade Point Reserve. Photo: PCL

1.4.3 Hail Creek Mine Community Development Fund - Welcome to Waders

The Welcome to Waders Project aims to increase awareness of shorebirds and ground-nesting birds to the Mackay community through identification and training sessions for the community and school students; engage the community in conservation strategies and, understand the pressures on shorebirds during critical life stages.

Pioneer Catchment & Landcare Group (PCL) have completed four community identification sessions in collaboration with Conservation Volunteers Australia (CVA), Mackay & District TurtleWatch and MacBOCA members. These sessions have enabled the community to identify the shorebirds that inhabit the region.

In addition, this project facilitated a shorebird workshop with presenters from the Queensland Wader Studies Group. Three members of QWSG flew up from Brisbane to deliver the workshop. The workshop covered 3 main topics: ecology and migration, threats and declines and identification. The afternoon session was a field trip to Shelgrit Creek (Illawong Beach Resort) where (thankfully) the weather held out for the identification session. A large number and diversity of shorebirds were present, some even had their breeding plumage (seen in the last few days before they migrate to the Northern Hemisphere) which was very rewarding.



PCL is raising community awareness of the significance of this region to shorebirds through displays (right) and a very popular workshop (above) with Queensland Wader Study Group. Photo: PCL



This project is supported by Pioneer Catchment and Landcare Group Inc., through funding from Hail Creek Mine Community Development Fund, the Australian Government's Caring for our Country, Queensland Wader Study Group and Birds Australia.

1.4.4 Don Myers Constructed Wetland monitoring

The Myers family own a cane farm in Homebush, adjacent to Sandy Creek, which flows into Sandringham Bay. A constructed wetland has been created which is designed to capture and treat runoff from the cane production area. The aim of the constructed wetland is to treat water prior to reuse through the irrigation system. The wetland will complement existing best practices being implemented on the farm including trash blanketing, controlled traffic farming and use of non-residual herbicides.

PCL has been working with the Department of Employment, Economic Development & Innovation (DEEDI) and the Myers family to monitor water quality of the wetland. The monitoring program will test water quality after irrigation in addition to testing before and during two wet seasons.



Don Myers Constructed Wetland, Homebush. Photo: PCL

1.5 Membership

PCL's membership base expanded to 65 in 2010/11. PCL newsletter is distributed to over 500 recipients.

The Management Committee met monthly and was made up of the following people:

- Mrs Margaret Lane (Chairman), representing Organisation member Society for Growing Australian Plants Mackay Branch
- Mr Dave Hunter (Deputy Chairman), Ordinary Member
- Dr Joan Fitzsimmons, representing Organisation Member Mackay Conservation Group
- Ms Wendy Eiteneuer (Treasurer 2010 onwards), Ordinary Member
- Cr Wendy Cameron, representing Organisation Member Mackay Regional Council
- Irene Champion, Ordinary Member
- Cr Karen May (until 2011), representing Organisation Member Mackay Regional Council
- Cr Ross Walker (2011 onwards), representing Organisation Member Mackay Regional Council
- Ms Dianne Williams, representing Organisation Member Australian Forest Growers.
- Hayley Glover acted as Secretary (non-voting) for the Management Committee (September 2010 onwards)

1.6 Financial Statement

The following table provides a summary of PCL's financial position and an overview of income, expenses and balance to 30.6.2011.

FINANCIAL STATEMENT FOR 2010/11			
Item	Income to 30/06/11	Expenses to 30/06/11	Balance at 30/06/11
AUSPICED PROJECTS	50,792	47,002	3,791
Leucaena Project (MRPMG)	375	375	0
Morag McNicholl Reserve	4,512	722	3,791
On-farm Composting (ANS P/L)	13,780	13,780	0
Peri-urban Project (MRPMG)	32,500	32,500	0
FUNDED PROGRAMS	72,574	41,070	31,505
Land for Wildlife (MRC)	6,000	6,000	0
Mackay Regional Council	50,000	28,695	21,305
Motor Vehicle (RCMW)	14,234	4,090	10,145
Operational Support (RCMW)	2,340	2,285	55
GRANTS	91,678	54,098	37,580
Don Meyers WQ Monitoring	5,405	1,175	4,230
Fish Kill Project	33,041	26,118	6,923
Peri-Urban (MRPMG)	10,604	10,604	0
Regional Workshops	20,000	590	19,410
Slade Point Reserve	10,198	10,198	0
Transition Towns	930	930	0
Welcome to Waders	11,500	4,482	7,018
PCL DISCRETIONARY FUNDS	93,124	62,284	30,841
Coordinator	20,866	20,866	0
Bookkeeping	3,455	1,471	1,984
Business Support	6,796	6,073	722
Communication Strategy	2,115	1,079	1,036
Member Support	5,000	2,462	2,538
Interest	5,183	0	5,183
Nursery	6,360	1,400	4,960
Project Officer (Old)	25,435	25,435	0
Reserve Fund	17,916	3,498	14,418
PROJECT OFFICER (2010/11)	57,850	41,618	16,232
SPECIAL PROJECTS	4,506	3,256	1,250
Healthy Soils Project	2,756	2,756	0
Landcare Day in the Gardens	1,750	500	1,250
TOTAL	370,524	249,327	121,198

1.7 Acknowledgements

In addition to those people and organisations already acknowledged in this report, many other people have contributed to the achievements of this organisation over the year. These include:

- Reef Catchments Mackay Whitsunday Isaac, for generous support of PCL core activities through the Regional Landcare Facilitator, in addition to technical support and resource sharing,
- Mackay Regional Council for housing our operations, and in particular thank you to the Natural Environment and Mackay Regional Botanic Gardens teams, and the Pest Control Officers;
- PCL's Management Committee members, who provide the strategic direction for the Group. A special thank you to Chairman Margaret Lane for her passion and dedication to PCL's ongoing survival and to community-based NRM in our region;
- Irene Champion, for regular assistance with all sorts of plant-related enquiries;
- Our volunteers, including Healthy Waterways volunteers, those who share their technical knowledge on our field trips and other events, and Gerard Masters for enabling the distribution of our printed monthly newsletter;
- Sarina Landcare Catchment Management Association and Whitsunday Catchment Landcare, for their support and collaboration;
- Department of Employment, Economic Development and Innovation staff, for their generous technical support and collaboration on field events; and,
- The range of local organisations, government agencies and their staff that contribute to events that we hold, provide technical advice and make presentations at field trips and other events.

Natural resource management in our community is enriched by your contributions.

Pioneer Catchment and Landcare Group Inc. acknowledges the support of:

