

# Annual Report 2013/2014



September 2014

## Inside this issue:

<b>Chairman's Annual Report</b>	<b>1</b>
<b>Project Officer's Report</b>	<b>2</b>
<b>Assistant Project Officer's Report</b>	<b>3</b>
<b>12/13 Management committee members &amp; staff</b>	<b>3</b>
<b>Communication &amp; publications</b>	<b>3</b>
<b>SLCMA:</b> • Organisational objectives • Vision and Goals	<b>4</b>
<b>Membership 12/13</b>	<b>4</b>
<b>Membership benefits</b>	<b>5</b>
<b>Program/project updates</b>	<b>5-9</b>
<b>Supporting community events</b>	<b>9</b>
<b>Working Groups Supported</b>	<b>9</b>
<b>Sarina Native Garden Competition</b>	<b>10</b>
<b>Weed Control Training Day</b>	<b>10</b>

## Chairman's Annual Report

Presenting an annual report is an opportunity to take stock of the year's activity & recognize the people & events that have contributed to the community's awareness of the Sarina & district environment.

Firstly there are the annuals.

1. Landcare Week, combining the Native Garden Grand Opening Day & garden competition.
  2. Coastcare week, with the Louisa Creek Bus Tour.
  3. Cancer Council's Relay For Life & our Gumnut team.
  4. Christmas Dinner social gathering.
  5. SLCMA's calendar with all its environmental dates and information.
- Feral Pig Control Programme in the Rocky Dam & Carmila Catchment's.

Monthly events include Sarina markets and Community Garden Weekend Volunteer Program. SLCMA's weekly event is the most demanding nursery volunteer contribution to seed collecting cleaning, planting & maintenance. Many of these events rely largely on the time, talent, humour & energy of our volunteers. But we should also recognize the part played by our staff & their family's for their great support.

The State Government Everyone's Environment Grant for Sustainable Land Management on small property's is being delivered over 3 years, so gives us some continuity of funding; but funding for other projects are not as clear.

The Plane Creek revegetation site is now in its 20<sup>th</sup> year and has had more attention through the Qld Governments *Everyone's Environment Grant 'Central Queensland Coast Riparian Health Project'*.

The 25<sup>th</sup> National Landcare Conference in Melbourne will have two Sarina representatives.

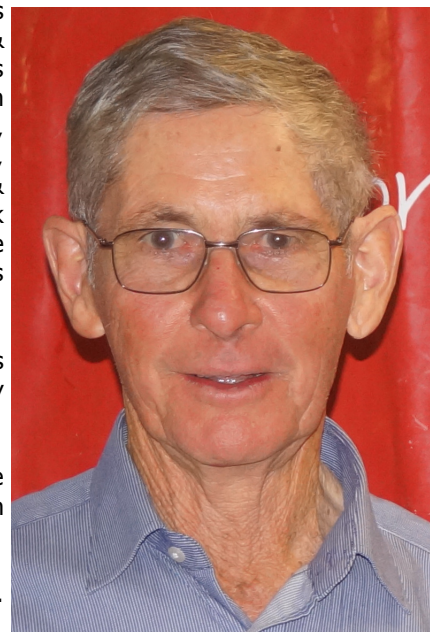
Land for Wildlife has continued support by Mackay Regional Council. Involvement with young people is still a priority & work with gardens & trees in Primary Schools & Sarina High School at the "Ted Malone" Rural Skills Centre is still popular.

The Nursery Expansion, completed this year has been a big job, water collection, storage & reticulation, fencing, shelter and benches, makes for happy gardening. Thanks to support from DBCT Management, Mackay Regional Council, Dowdens Pumping and Water Treatment, Dalrymple Bay Coal Terminal Pty Ltd, Sarina & District Men's Shed & Sarina Community Bank Branch Bendigo Bank. Other sponsors include Landcare Australia Limited "Landcare Grow Grants Program" & Australian Government.

A special word of appreciation to the ladies Margaret, Nadine & Lynette for keeping every detail & action happening.

My thanks to the Executive Ray Greaves, Duane Brown & Cr Theresa Morgan for their consideration & support.

Rod McFadzen, Chair.



# Project Officer's Report

It is with great pleasure that I am able to provide my 4th Project Officer's report to SLCMA members, volunteers and project partners. Firstly I would like to begin by acknowledging and thanking Mackay Regional Council for their ongoing support through the *Natural Environment Levy* and the Queensland Government's support through the *Everyone's Environment Grants* as well as support from SLCMA's many other project partners which allows SLCMA to continue to work with stakeholders on natural resource management projects across the Sarina Catchment. This year has seen SLCMA strengthen its partnership with Sarina Community Branch Bendigo Bank through Sarina Native Garden Competition sponsorship, an equipment purchase community grant, and SLCMA assisting with organising and hosting a Bendigo Bank Central Queensland managers field trip at the Sarina Community Native Gardens and Ted Malone's Rural Skill Centre. Partnerships have also been strengthened with Isaac Regional Council, and partnering with Reef Catchments to deliver on-ground work at Carmila Beach Reserve.



Margaret Meng promoting the SLCMA Community Volunteer Program at the Sarina Women's Health Expo

It has certainly been an eventful year beginning with Saskia and James welcoming Jaylan Heaphy into their family. A big thankyou to the SLCMA Executive, Rod, Duane, Ray and Theresa and SLCMA's Administration Officer, Nadine, and our wonderful volunteers for ensuring the adjustment at the SLCMA office during the first few months without Saskia at the helm was a smooth transition.

The annual aerial pig shoot across the Rocky Dam Creek and Carmila catchments was a huge success again, thanks to the amazing organisational skills of SLCMA's Administration Officer, Nadine Hamill. The end of 2013 saw SLCMA Executive, staff, members and volunteers celebrating the beginning of the Christmas break with a dinner at the Sarina Bowls Club.

The SLCMA Community Volunteer Program has remained strong throughout the year with volunteer numbers progressively increasing at the SLCMA Community Nursery and Sarina Community Native Gardens. SLCMA volunteers are a very dedicated bunch and apart from their assistance in the SLCMA Community Nursery and Sarina Community Native Gardens they have continued to support SLCMA at annual events such as Relay for Life, National Tree Day and SLCMA Landcare and Coastcare Week events.

Throughout 2013/14 SLCMA has continued to assist landholders to become sustainable and engage community members through many workshops, field days and events such as the Sarina Showground Markets, Reef Catchments Grazing Forum, Ag Trade Life, Sarina Permaculture Group Seed Circus and a Weed Control Training day. A field trip to the revegetation project site at Louisa Creek during Coastcare week was well attended and SLCMA continues to work with schools and students through the development of native plant and bush tucker gardens. More in-depth reports on individual SLCMA projects can be found throughout the remainder of this year's annual report.

2014 is the year for celebrating 25 years of Landcare Australia. SLCMA celebrated with a cake cutting ceremony and celebration of our volunteers at the SLCMA Community Nursery Open Day during Landcare Week. This event was funded by Landcare Australia *Landcare Grow Grants*. The event included announcing the winners of the 2014 *Sarina Native Garden Competition*. It is always great to see local gardeners utilising native plants within their landscaping to reduce water usage and the spread of exotic environmental weeds into local habitats whilst increasing biodiversity in their gardens. The Sarina Native Garden Competition rewards gardeners for their amazing efforts. Due to the high quality of entrants vying for prizes in 2013; the 2014 competition expanded to 2 separate categories of Rural and Suburban. A huge thankyou to the 2014 competition sponsors Woodmans Mitre 10, Dowdens Pumping and Water Treatment, MGM Handyman, Mackay Regional Council, Farm HQ and Sarina Community Bank Branch Bendigo Bank. And a big thank you also goes out to our judges from SLCMA management committee, Society for Growing Australian Plants and Mackay Regional Botanic Gardens for taking the time out of their busy schedules to offer their support.

Unfortunately throughout this year SLCMA has continued to face decreased operational funding support from Federal Government down to regional stakeholders and this has seen my employment become a part-time position as SLCMA continues to search for long term sponsorship. However, SLCMA's drive to become self sufficient has increased and continued the expansion of the SLCMA Community Nursery, welcoming Lynette Keir, casual Assistant Project Officer, to the team in late April. Lynette has assisted with the required increases in plant propagation and nursery management duties to meet the growing demand for local native plants and bush tucker foods. The road to self-sufficiency has also seen SLCMA utilise the wide range of knowledge and experience of staff members to begin development of a SLCMA Revegetation Team to assist with on-ground works and project delivery.

Over the last 4 years I have witnessed SLCMA strengthen its relationships with project stakeholders and successfully develop and deliver a diverse range of natural resource management projects. As SLCMA Project Officer, I meet amazing people everyday dedicated to helping their local environment and community. I am looking forward to continuing to support SLCMA and its Executive, staff, members and volunteers as SLCMA continues its journey to grow and face future challenges within the Sarina Catchment.

Margaret Meng, SLCMA Project Officer

# Assistant Project Officer's Report

I take pleasure in bringing to you my first annual report and hope that there will be many more to come. My time at Sarina Landcare Catchment Management Association has seen a transition from nursery volunteer to assistant project officer. I continue to volunteer many hours maintaining the Sarina Landcare Community Gardens and obtaining any local and rare species for our garden collection. I also continue as a volunteer to collect seeds to support the nursery and provide the activities for the volunteer mornings. I continue to be heavily invested in the support of the SLCMA Community Nursery as both a volunteer and employee.



Lynette Keir assisting SLCMA volunteer on a seed collection trip to Carmila Beach Reserve

The running and supervision of the Wednesday volunteer morning has been most enjoyable. The volunteers are my extended family. I adore their compassion towards not only the environment but also to each other and would like to thank them for their time and efforts.

Being a community organisation we rely heavily on our networking and relationship with not only members but also the local community. With this in mind the strengthening of our networks has increased. The Sarina Landcare Catchment Management Association Facebook Page has also been a focus. We have seen a huge surge in our 'likers' jumping from 94 likes to over 200 in just over 24 hours. Our Facebook page is an excellent tool to access the general public. With it we are able to grow our connections and to notify the community of our work and advertise our plants.

My time so far has been spent working with landholders assisting with site visits for Land for Wildlife and peri urban programs. The most common issues have been erosion control, weed advice, and plant identification. Local schools and kindergartens have sort plant advice for child safe plantings and bush tucker gardens.

I have also been representing Landcare with a stall set up at every Sarina Showground Market with the assistance of SLCMA Secretary Ray Greaves and Chair Rod McFadzen. The SLCMA display also appeared at the careers day at the Sarina State High School. It was called 'SHIFT day' and was focused on connecting local businesses with the students or potential future employees of our community. We had a lot of interest from the students on what we do, what SLCMA stands for and also the studies I had taken in Environmental Science at tertiary level.

We also had the Sarina Landcare open day celebrating 25 years of Landcare. Yet again, the stall was set up and tours through the gardens and nursery were conducted. It was a great day and was only possible by the available SLCMA Executives, volunteers and staff who gave freely of their time.

## 2013/14 Management Committee Members & Staff

### Management Committee Members:

<b>Chair</b>	Rod McFadzen
<b>Vice Chair/Treasurer</b>	Duane Brown
<b>Secretary</b>	Ray Greaves
<b>Executive</b>	Cr Theresa Morgan
<b>Executive</b>	Position vacant

### Staff:

<b>Co-ordinator (absent on leave)</b>	Saskia von Fahland
<b>Administration Officer</b>	Nadine Hamill
<b>Project Officer</b>	Margaret Meng
<b>Assistant Project Officer</b>	Lynette Keir
<b>Revegetation Officer</b>	Tom Curtis

## Communication & publications

Sarina Landcare Catchment Management Association

SLCMA Catchment News 2014

- **SLCMA Catchment News** (your local newsletter) is distributed monthly to approximately 280 recipients. The newsletter keeps SLCMA members and local land managers up-to-date with SLCMA project delivery, available funding, workshops, field days, volunteer opportunities and the latest natural resource management news.
- **SLCMA website and facebook page** are great ways for the community to receive upcoming and 'real time' notification of events in our catchment.
- **SLCMA Calendar 2014** was well received by members, schools and volunteers. The calendar showcases places of interest and critters from around the catchment. It also includes important dates such as meetings, environmental awareness events and cattle sales. *Thankyou to Mackay Regional Council & Dalrymple Bay Coal Terminal Management for their contribution towards the printing costs.*
- **SLCMA General meetings** are held bi-monthly and are an opportunity for members and the community to discuss and learn more about Landcare related topics, local issues and solutions.

Thankyou to our guest speakers throughout the year including:

- Debbie Chamberlain, PhD Candidate, University of Queensland
- Alexis Marshman, Sarina Permaculture Group





# Organisational Objectives

The objectives of Sarina Landcare Catchment Management Association Incorporated are:

- a) To promote a strategic and integrated approach to natural resource management and biodiversity conservation in the Sarina Catchment area.
- b) To foster coordination and cooperation between land managers, community groups, industry and government agencies in their natural resource management activities.
- c) To promote understanding and awareness of the interactions and relationships between the natural systems and resources of the catchment.
- d) To identify and prioritise natural resource management issues within the Sarina Catchment Area.
- e) To prepare, coordinate and implement priority action plans identified in the Sarina ICM Strategy.
- f) To promote sustainable solutions and actions through strong community, industry and government partnerships in catchment management strategies.
- g) To provide a forum for community and government discussion on natural resource and catchment management issues.

## SLCMA's Vision and Goals

### Vision for the Sarina Catchment

*The Sarina Catchment Area is an economically viable region, which is ecologically sustainable and well regarded as a healthy place to live and work*

### Goals

**Land Use Planning:** The land resources of the Catchment are managed in an ecologically sustainable manner.

**Land Management:** The most appropriate ecologically and economically sustainable land management practices are adopted throughout the catchment.

**River/Creek Management:** The creek systems are managed in such a way as to enhance and maintain their natural values while providing for the needs of the catchment community.

**Water Management:** The integrity of the natural systems within the catchment are enhanced and maintained while providing water of a suitable quality and quantity to meet the needs of the community.

**Coastal Management:** Management of the coastal area in a way that will ensure the sustainable use of the natural resources

**Vegetation/Biodiversity:** The native vegetation and biodiversity values of the catchment are enhanced and maintained and the natural systems are not further degraded.

**Community Awareness and Involvement:** A community that is aware of the need to maintain and improve the natural resources of the catchment and is actively involved in doing so.

## SLCMA Membership 2013/14

Class of Membership	Is membership of the class to be limited or unlimited in number?	If class of membership is to be limited in number, how?	Limitations relating to the class of membership	Entry requirements for class of membership	Number of members
Government Organisation Member	Unlimited	N/A	1. Full voting rights	Open to nominated Councilors of local authorities within the Association's catchment area, and nominated officers of State Government departments or authorities, or divisions or branches within them.	14
Associate Member	Unlimited	N/A	1. Full voting rights	Shall be opened to nominees of: Companies and Cooperatives carrying out activities within the Catchment area.  Local organizations and institutions.  Local groups with a direct interest in land use	40
Ordinary Landcare Member	Unlimited	N/A	1. Open to any adult owners or occupiers of land 2. Full voting rights	1. Must be over 18 years of age 2. Annual fee for membership, the amount to be decided at an annual general meeting	142
Junior Member	Limited	There are to be no more than 50 Junior members at any time	1. May not vote 2. Not eligible for election to management committee positions	1. Must be under 18 years of age 2. Must be a registered Junior Landcare member.	24



# SLCMA Membership benefits!

A membership with SLCMA has many rewards:

- ◇ Easy access to Natural Resource Management information and extension
- ◇ Monthly newsletter, meeting minutes, progress and project reports
- ◇ A vote on issues in your catchment
- ◇ A say in the types of projects applied for
- ◇ Up to 10 free local native seedlings from the SLCMA Community Nursery each year
- ◇ Invitations to Natural Resource Management bus tours, field days and workshops

## Program & project updates:

### Land for Wildlife Program

SLCMA continues to work alongside Pioneer Catchment and Landcare to deliver the Land for Wildlife program within the Mackay Regional Council boundaries. This coordinated approach provides consistency across the region and beneficial linkages to other complimentary projects and programs. The Land For Wildlife program is a voluntary program that is becoming popular with landholders as it recognises those who are making a significant effort to encourage and provide habitat for wildlife on their properties. Those landholders that are actively managing their properties through conserving native habit whilst integrating nature conservation with other land uses such as agriculture, grazing or tourism are also encouraged to participate in the program.



Land For Wildlife registered participants receive a number of benefits including; 20 free native plants per year, land management advice and links to resources, re-visits to registered properties and invitations to field days and workshops. SLCMA & PCL have continued to work together to produce a regional newsletter for participating landholders. This newsletter is a great resource for landholders providing advice on local land for wildlife issues, property profiles, fauna and flora information and updates about the program.

The Land for Wildlife program is delivered within the Mackay Regional Council boundaries of the Sarina Catchment by SLCMA and the Pioneer Catchment by Pioneer Catchment and Landcare Group (PCL); on behalf of the Mackay Regional Council Natural Environment Program.

### SLCMA Community Nursery

The SLCMA Community Nursery continues to operate as a training facility for volunteers, students and trainees to learn about general nursery practices, hygiene and native plant propagation. The number of native plants propagated and supplied for local revegetation projects, environmental awareness events, Landcare members, landholders and schools has increased this year as demand grows for increased local biodiversity and bush food plants.



*SLCMA volunteers enjoying a hard earned morning tea*

Over the past 12 months the nursery has continued to expand and Lynette Keir, Assistant Project Officer has continued maintenance and repair of the nursery as a large part of her work. The new irrigation system is now connected the to rainwater tanks and up and running thanks to sponsorship from Dalrymple Bay Coal Terminal Pty Ltd and Dowdens Pumping and Water Treatment. The shade house has been repaired and with new shade cloth fitted and secured to the frame. There has been a lot of work done in the undercover area to organise propagation and seed collection equipment. With the help of volunteer Peter Whitehead, SLCMA staff erected new shelving kindly donated by Mackay Regional Council. The shelving now houses the propagation equipment for the volunteer mornings, making it more accessible and organised. This has led to the more efficient running of our volunteer mornings.

SLCMA also purchased a new chemical cupboard from successful funding from the Sarina Community Bank Branch Bendigo Bank. This has ensured the security and safety of chemicals. The new chemical cupboard has been vitally important with the growth of junior member volunteers visiting the nursery.

Moving forward has seen a focus on expanding the range of species to suit the suburban back yard. Also the propagation of more grasses has been targeted for not only revegetation, but also for the suitability of rockery gardens. The growth of species range has been the driving force of the new bench being erected with a second proposed bench to be built. This will ensure that we can utilise the space of our nursery to full capacity and house the ever growing species list.

The SLCMA Community Nursery is operated by SLCMA staff and receives enormous support from our volunteers who help propagate and look after the native plants. The native plants are utilised on community and school revegetation projects; up to 10 free native plants are provided to Landcare members per year. The purchase of plants is open to the public during SLCMA Community Nursery open hours every Wednesday and sold at the Sarina markets or to other organisations seeking local native plants. Any proceeds gained from selling plants go towards operation costs of the SLCMA Community Nursery to help pay for consumables, materials and maintenance.

Lynette Keir, Assistant Project Officer

## SLCMA Community Volunteer Program

The SLCMA Community Volunteer Program operates every Wednesday 9am-12noon at the SLCMA Community Nursery and on the second Saturday of every month 8-11am at the Sarina Community Native Gardens. The volunteer programs are a great way to learn more about our local native plants, how to propagate them and gain skills in general nursery activities. It is also a great way to meet some other great volunteers.

The team of volunteers play an integral role in the successfulness of SLCMA Community Nursery processes from the collection and cleaning of seeds to growing on the seedlings and assisting with the nursery expansion. SLCMA volunteers also have a large role to play in the continued development and maintenance of the Sarina Community Native Gardens. SLCMA has welcomed many



*SLCMA volunteers maintaining the Sarina Community Native Garden*



*SLCMA volunteers participating in a Seed Collection excursion along Plane Creek*

new faces (young and old) into the volunteer program this year and a huge thank you goes out to the long term volunteers who have generously taken the time to mentor the newcomers.

SLCMA greatly values its community volunteers who were presented with an appreciation certificate and new sun-safe hats at the recent SLCMA Community Nursery Open Day held during Landcare Week. The event was sponsored by Landcare Australia Ltd through their *Landcare Grow Grants* and the purchase of the sun-safe hats was made possible through Local Marine Advisory Committee (LMAC) funding.

The program is currently supported by Mackay Regional Council, Natural Environment Levy which provides SLCMA with funds to facilitate the volunteer mornings.

## Supporting our local schools

SLCMA continues to provide support to our local schools, conducting school activity days, offering technical advice and plants for onground projects as well as assisting teachers and students with resources and information. SLCMA has received funding from Mackay Regional Council, Natural Environment Program through the *Landcare Support Project* which gives SLCMA the foundation to provide a minimum of 10 days support to local schools per year. Some highlights of the year include:

**"Environmental Sustainability 2013" School Activity Day** (Nov 2013) Over two days, 217 students from St Anne's Catholic Primary, Chelona, Dundula and Central Primary schools came together at Sarina State High School Rural Skills Centre to participate in various activities. SLCMA staff delivered a water quality activity to participants measuring and comparing the water quality within 3 manmade sediment basins at the centre. Among many of the water quality parameters the students measured were pH, Dissolved Oxygen, Turbidity. Students were treated to a tour of the centre by Sarina State High School staff. A favourite of the day was the composting with worms activity delivered by Mackay Community Gardens.



The activity day was funded through Mackay Regional Council Natural Environment Levy and Dalrymple Bay Coal Terminal Management aimed to create a greater understanding of sustainable land management practices.

**School Resource Kits:** Macro-invertebrate identification, "River Story" (catchment management) and water quality sampling kits have been well utilised throughout the year by local schools.

**Sarina State High School (SSHS):** We have a strong partnership with SSHS Agriculture Department and the Ted Malone Rural Skills Centre as well as individual classes. SLCMA has supported the permaculture activities occurring at the centre by the Sarina Permaculture Group advising on the utilising native plants to increase biodiversity and encourage natural pest control. Students and teachers have been involved a range of Landcare activities and SLCMA also attended the SSHS SHIFT day in August 2014 partnering with the pest education trailer and Landcare display.



**Sarina State Primary School SEP:** SLCMA assisted the Sarina State Primary School Special Education Program to develop a Sensory garden including edible local bush food.

**Swayneville State Primary School:** SLCMA attended the under 8's day at Swayneville State School in. Students got their hands dirty potting on native seedlings.



**Alligator Creek State School:** SLCMA attended the under 8's day at Alligator Creek State School in. Students got creative and draw pictures of "What Landcare means to me".

**Reef Guardians School—**SLCMA continues to maintain partnerships with Great Barrier Reef Marine Park Authority attending a Reef Guardian Partners meeting and a school activity day at St Lawrence State School in May 2014.



## Sarina Community Native Gardens

The establishment of the *Sarina Community Native Gardens* has been ongoing this year, with the SLCMA Weekend Community Volunteers attending to the gardens on a monthly basis. Volunteers from all ages have enjoyed family friendly activities as they learn about native plants, assist with planting, weeding, mulching and general garden maintenance. Weekend volunteer mornings will continue to assist with garden expansion and ongoing maintenance.

SLCMA volunteer Peter Whitehead has contributed many volunteer hours on a weekly basis to assist with garden maintenance. Conservation Volunteers Australia (via BMA Hay Point Services funding) also assisted SLCMA to prepare the gardens for the SLCMA Community Nursery Open Day which included tours of the gardens and SLCMA Community Nursery.

Many of the plants are maturing to provide flowers and fruit, providing a seed source for SLCMA's native seed bank. The variety of native birds visiting the gardens continues to increase as they use the gardens for shelter and a food source. Whistling ducks nested again this year as did the Bush-stone Curlews and the ever present Masked Lap-wings (Plovers). The gardens provide great nesting grounds and camouflage for the birds and their eggs.

More local native plants have been added to the gardens, concentrating on developing the rainforest gardens with plants sourced from a combination of the SLCMA Community Nursery and Society for Growing Australian Plants. The all-weather walking track is in regular use now as the local community utilise the gardens for casual strolls around the neighbourhood and view the garden designs.

The sensory gardens are proving to be very popular with visitors enjoying the edible fruit, feeling the silky, spiky and sticky pants, smelling the fragrant *Lomandra hystrix* and the unusually fragrant *Herbertia scandens* (Native climbing guinea flower), the *Casuarina cunninghamiana* (River she-oak) are a favourite for visitors and are now in high demand from local landowners.

SLCMA will continue to work with Mackay Regional Council, Mackay Regional Botanic Gardens and Society for Growing Australian Plants to identify suitable plant species and groupings for additional plantings.

SLCMA would like to thank Mackay Regional Council Natural Environment Program for providing financial support for the current stage of the project.

## Coordinated Feral Pig Control

SLCMA continued to work alongside project partners Mackay Regional Council, Reef Catchments, Plane Creek Productivity Services and landholders this year to help coordinate the annual feral pig control program throughout Rocky Dam Creek and Carmila Catchment and for the first time extending down to the Carmila Catchment.

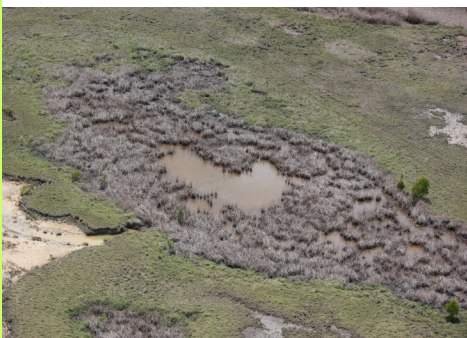
Throughout December 2013 and January 2014, 51 landholders participated in two aerial control events. Numbers were down this year which is a great indication that the control program is reducing numbers of pigs within in the adjoining catchments. The control program resulted in 171 pigs controlled during 35 hours of fly time.

Landholders work closely together and recognise that a pig controlled a few kms away will benefit them and their own properties.

Through the coordinated approach, a large area of the catchment is covered in a short space of time, increasing the potential to reduce negative impacts on farming land and natural areas.

The Feral Pig Control Program is a collaborative approach between landholders and project partners using a variety of control methods at different times of the year.

*Evidence of long term pig damage in coastal waterholes and pastures*



As well as the aerial control events, the program has involved meetings with landholders, and loaning of pig traps.

Participation, funding and in-kind support from landholders and project partners is integral to the success of the program.



*Lynette Keir rescuing a Curlew chick from certain disaster (being stepped on) as it hid unseen in the native phylla*



*Mark Sant (shooter) with a pig caught in the act of sugarcane paddock destruction*



## Community Coastcare in the Mackay Whitsunday Region

SLCMA is working closely with Pioneer Catchment and Landcare Group (PCL), Whitsunday Catchment Landcare (WCL) through the CQCLN to implement coastcare activities across the region at Louisa Creek Reserve, Far, Cannonvale and Conway Beaches. Conservation Volunteers, Mackay and Whitsunday Regional Councils will also play a big role. Activities at the Louisa Creek Reserve Project site began with a control burn conducted in July 2013 to control and reduce invasive weeds such as guinea grass and lantana and encourage native plant regeneration. Over the 12 months following the burn a bollard fence and watering line have been installed and 800 native seedlings planted. A Coastcare Week field trip with a tour of the site was held in early December 2014. 25 community members attended the trip learning about the current project and the history of the site from Louisa Creek local Betty Hobbs and Mackay Regional Council staff member Jack Langdon who have played integral roles in the revegetation of Louisa Creek Reserve. National Tree Day was held at the site with 10 volunteers planting and guarding 100 plants and conducting watering and maintenance of existing plantings. Future activities include planting a further 200 native plants, ongoing maintenance of existing plants and weed control. The project has been made possible through funding from the Department of Environment and Heritage Protection—Everyone's Environment Grant 12/13.



Participants of the Coastcare week field trip learning about the project site from Mackay Regional Council staff (above) and SLCMA Project Officer Margaret Meng (below)



## Central Queensland Coast Riparian Project

The Central QLD Coast Landcare Network is working together to deliver the Central Queensland Coast Riparian Project which includes activities at Plane Creek Revegetation Site (by SLCMA), Pioneer River, Marian (by PCL) and Gregory River (by WCL).

SLCMA is focussed on improving the Plane Creek Revegetation site and has been working closely with Mackay Regional Council and Conservation Volunteers Australia to conduct onground activities at the site. Project activities have included the re-installation of the walking track, community seed collection trips, weed control and planting activities. The project is funded through Whitsunday Catchment Landcare, via Department of Environment and Heritage Protection—Everyone's Environment Grant 12/13.



Left: Re-instatement of the walking track July 2014

Right: Conservation Volunteers Australia conducting weed control and planting activities at Plane Creek Revegetation site



## SLCMA Project Support Equipment Purchase

SLCMA received sponsorship funding from Sarina Community Bank Branch Bendigo Bank for the purchase of equipment for use within the SLCMA office and SLCMA Community Nursery. The new equipment will assist SLCMA to continue to carry out community projects in an efficient, economical and sustainable manner. SLCMA staff will now be able to conduct site visits paper free with the use on a new ASUS Tablet.

Other purchases include: a new camera, laptops, pressure cleaners, lockable storage cupboards and solar security lights, portable microphones. All items purchased will greatly benefit the safety of SLCMA staff and community whilst assisting SLCMA to continue to provide the best possible service promoting natural resource awareness within the Sarina Catchment region. SLCMA would like to thank the Sarina Community Bank Branch Bendigo Bank for its generous sponsorship.

# Building resilience of natural area and sustainable land management practices within the Mackay Whitsunday Region

SLCMA is currently conducting free property visits through their new project *Building Resilience of Natural Areas and Sustainable Land Management on Small Properties within the Mackay Whitsunday Region*. The project is being delivered in partnership with the Central Queensland Coast Landcare Network

SLCMA staff began by delivering 100 pamphlets within peri-urban hot spots in the Sarina Region. The project is proving very popular with peri-urban landowners with properties between 2-50 acres. SLCMA staff have already conducted several free property visits offering advice on land management issues and native plant and weed identification.

*Building Resilience of Natural Areas and Sustainable Land Management on Small Properties within the Mackay Whitsunday Region is funded by the Queensland Government's Everyone's Environment Grants.*

## Other projects and grants underway

- **African Tulip Pilot project** funded by Mackay Regional Council—Natural Environment Program. The trial control part of this project has been extended to December 2013, to allow for more completed monitoring and follow up control of suckering trees.
- **Administration support** funded by the Australian Government, Grants to voluntary Environment & Heritage Organisations. This grants program has provided essential support towards some of our administration and operational costs as well as the purchase of a new computer.
- **Sarina Landcare Support Project** funding from Mackay Regional Council—Natural Environment Program  
This project supports SLCMA to provide ongoing services to landholders and the general community through activities such as the SLCMA Community Volunteer Program, environmental awareness events, displays at local events, working with stakeholders, coordination of projects and workshops.

## Supporting Community Events

- **Reef Rescue Grazing Forum** (Mar 2014) : SLCMA as part of the Central QLD Coast Landcare Network hosted a display at the Reef Rescue Grazing Forum in March 2014.
- **Sarina Women's Health Expo:** SLCMA attended the Sarina Women's Health Expo held in March 2014. SLCMA promoted the SLCMA Community Volunteer Program.
- **Sarina Permaculture Group:** The 1st local Seed Circus was held by the Sarina Permaculture Group in March 2014. SLCMA was invited along to discuss the importance of increasing biodiversity through integrating native plants within vegetable gardens
- **Relay for Life** (Apr 2014) — For the 7th year, SLCMA volunteers, staff & members once again joined the "Gum-nut" team to participate in the annual Sarina Relay for Life, a fundraising event for cancer research. A big thankyou to Nadine Hamill who makes a special effort each year in organising the SLCMA Gum-nut team.
- **Ag Trade Life Show** (May 2014) — SLCMA joined PCL and the Mackay Regional Pest Management Group with the Pest Education Trailer and Landcare display ~ providing a range of information to landholders about native plants and pest management.
- **National Tree Day** (Jul 2014) —SLCMA joined forces with Conservation Volunteers Australia to plant native plants at the Louisa Creek Revegetation Site
- **Sarina markets** — We have continued to waive the Landcare flag at the local markets each month, it is a great opportunity to chat with the community, encourage the use of native plants, provide information to landholders and highlight some of the projects and programs that are available.



SLCMA Chair, Rod McFadzen, participating in the survivors walk at the 2014 Relay for Life

## Working Groups supported

SLCMA is proud to support the following working groups and projects:



Central QLD Coast  
**Landcare**  
Network

- Central QLD Coast Landcare Network
- Mackay Whitsunday Regional Pest Management Group
- Mackay Regional Council — Natural Advisory Committee
- Rocky Dam Creek Coordinated Feral Pig Working Group
- Isaac Regional Council—Coastal Working Group



## Sarina Native Garden Competition

Due to popular demand, SLCMA held the *Sarina Native Garden Competition* again this year, which generated a lot of interest amongst local gardeners. The 2014 competition expanded to include both Rural and Suburban categories. The aim of the native garden competition is to support and promote the use of Australian and local native plants in gardens.

It was a great opportunity to provide gardeners with advice and identify any potentially weedy garden plants and suggest native alternatives and see the variety of ways native plants are being utilised in both urban and rural settings. All entrants received a voucher for 5 free native plants, from the SLCMA Community Nursery.

A big thankyou to the sponsors of the competition; Woodmans Mitre 10, Dowdens Pumping and Water Treatment, MGM Handyman, Mackay Regional Council, Farm HQ and Sarina Community Bank Branch Bendigo Bank. A thank also to Dale Arvidson (Mackay Regional Botanic Gardens), Margaret Lane (Society for Growing Australian Plants) and Ray Greaves (SLCMA) for their time, knowledge and assistance with judging the garden entries. Once again the judging process was difficult this year with some great native gardens on display.

The winners were announced during the Sarina Community Nursery Open Day, celebrating 25 years of Landcare Australia.

Congratulations to the winners who also received 1 year SLCMA membership and copy of Weeds of the Mackay Whitsunday Region courtesy of Mackay Regional Pest Management Group.

First place Suburban —Matt Moore—\$500 vouchers from Dowdens Pumping and Water Treatment

Second place Suburban —Tom & Lyn Jantke - \$250 from MGM Handyman

Third place Suburban—C&K Kindy - \$150 account @ Sarina Community Bank Branch Bendigo Bank

First place Rural —Jeane Gearing—\$500 vouchers from Woodmans Mitre 10

Second place Rural—Stacey Tabert & Gavin Leiminer - \$250 from Mackay Regional Council

Third place Rural—Sheryl Kendall - \$150 Farm HQ

We look forward to seeing working with our partners again next year and seeing the existing native gardens progress and new native gardens being established



## Weed control training workshop

SLCMA held a Weed Control Training Workshop at for participants to learn about the importance of maintaining weed control equipment and keeping accurate records of control programs. Participants were able to view the information available from the Mackay Regional Pest Management Group's Pest Display Trailer and were treated to a demonstration of the Quickspray unit by Mackay Regional Council Pest Control Officer, Mick Tuckett.

Local contractor Ray Greaves demonstrated how to assemble and maintain 5L sprayers and 15L backpacks. But the highlight of the day was Ray's demonstration of the Lantana Splatter Gun which SLCMA has available for landholders to hire. Various participants gained hands on experience at putting the equipment together.

The Weed Control Training Workshop was free to local landholders and property managers. The workshop was an initiative of the Central Queensland Landcare Network through their *Building resilience of natural areas and sustainable land management on small properties within the Mackay Whitsunday Region*, funded by the Queensland Government *Everyone's Environment Grants Round 2*.



**SLCMA is supported by:**

