

Annual Report 20152016



September 2015

Chairman's Annual Report



Gloria Murray

I feel very proud to be delivering my 2016 Annual Report as the Chair of Sarina Landcare Catchment Management Association Inc

I would be the proudest Chairperson in all of Sarina. This offers me a chance to take stock of Sarina Landcare's activities and all who have helped to pull these together thereby recognizing the passionate commitment of all paid and volunteer staff who contribute to the community's awareness of the Sarina & district environment.

My heartfelt thanks go to our Management Committee who are a delight to work with. Each of these members has a heart of gold and sincere passion for contented teamwork.

Our team leaders and administration officer are all very positive and deeply committed persons. Sarina Landcare is climbing the ladder of success because of the hard and dedicated hours put in by these incredible people.

The SLCMA Community Volunteers are such special group. They all work alongside the Nursey Officer – and have become a happy family, singing and laughing and generally having a wonderful time each Wednesday. The SLCMA Community Nursey is filled to the brim with happy smiling plants who when planted out into the Sarina Community spread happiness everywhere.

The Nursery has taken on some incredible changes over the last few weeks. We now have some shiny new stainless steel work tables. The shed has been moved from the nursery to the backyard of the office, thereby creating much more work space in the nursery. Another space has been created along the fence line between the Nursery and Council to create pond space for water plants. Lots of positive changes are taking place and I encourage you, –Sarina Community,- to pop in for a look or maybe to offer yourself as a Volunteer.

The Sarina Community Native Gardens took a bit of a beating with the very wet weather but thanks to the hard work and dedication of the Volunteers it is slowly starting to look amazing again and I urge you, – Sarina Community,- to pop down and pay the gardens a visit. You will be surprised how great native plants can look in your garden.

Our monthly newsletter is a remarkable supply of information to all our 200 plus members. Action on toads, dung beetles, plant of the month and other environmental matters are covered in this print-out.

Land for Wildlife is continuing to expand – if you are interested in heading down this path please call in and have a chat to our friendly staff. They will certainly point you in the right direction.

We were honoured to have Michelle Landry MP visit us this year. She was shown the Sarina Community Native Gardens and SLCMA Community Nursery, with discussion following on to funding opportunities through the Federal Government.

In conclusion, I would like to thank all our supporters, members, volunteers & sponsors for having so much faith in what SARINA LANDCARE CATCHMENT MANAGEMENT ASSOCIATION INC do, in way of keeping the Sarina Catchment such a healthy environment and, it truly is our pleasure to do so.

Inside this issue:	
Chairman's Annual Report	1
Coordinator and Nursery Officers report	2
15/16 Management committee members & staff	3
SLCMA: • Organisational objectives • Vision and Goals • Membership Benefits	3
Membership 15/16	4
Communication & publications	4
SLCMA Community Nursery	5
Program/ project updates	5-8
Supporting community events	8
Supporting local schools	9
Working Groups Supported	9
Supporting organisations	9

Coordinator's Report

It is with great pleasure I compile this report in summary of a busy year for SLCMA. The year has seen some challenges with all levels of government funding significantly reduced. Despite this SLCMA have achieved some significant advancements throughout the year. Central to the success of SLCMA this year, has been the amazingly dedicated management committee team. They were a predominately new team but have lead SLCMA through the year with enthusiasm and positivity. SLCMA are extremely fortunate to have such a diversely talented management committee who are extremely supportive and an inspiration. On behalf of the staff I express our extreme gratitude.



The team has seen some new faces this year with myself included, we are thrilled to have a team of diligent workers who are all passionate in promoting and delivering natural resource management activities in the Sarina catchment area. SLCMA's team of staff truly go above and beyond in the hours they are prepared to put in to ensuring SLCMA continues to succeed. It is an immense pleasure to be part of such a well rounded team of individuals with diverse areas of interest, expertise and knowledge all pulling together to work for a common goal.

Our amazing team of volunteers seems to have grown throughout the year with new faces and the return of some familiar faces. The countless hours put in by the volunteers at SLCMA is never overlooked. It is such a pleasure to have a group of like minded people contribute to our organisation in such a positive way.

Throughout the year SLCMA has continued to work as delivery partners for Mackay regional council and Reef Catchments on a vast array of Natural Resource Management projects, some of these have been ongoing projects such as the delivery of Land For Wildlife and the continued delivery of the Feral Pig Aerial Control program while others such as the treatment of Cats Claw Creeper in Plane creek are new projects. These are detailed further in the report body. Some new working relationships have developed throughout the year such as that with Isaac Regional Council and Wilmar, we look forward to building on these into the future.

SLCMA have been very fortunate this year to obtain several smaller funding amounts for specific projects that have enabled some exciting projects to commence. Most notably is the establishment of an educational precinct. This area will feature a Wetlands Treatment Train, a native bee hive, Sustainable food gardens, Worm farm and composting area, a Rain garden and a simulated volcano. SLCMA is extremely grateful to the organizations that have provided funding for this educational precinct to become a reality. (DAF, DBCT PTY LTD, Sarina Bendigo Bank, and Rio Tinto)

Ongoing support from Dalrymple Bay Coal Terminal Management has seen SLCMA propagate and plant a significant amount of native tubestock for revegetation purposes. This work is integral to the success of the SLCMA Community Nursery and we are hopeful to continue such works for DBCT management in the future.

Much needed upgrades to the SLCMA Community Nursery facility have been occurring of late, this is achievable through support from DBCT PTY LTD, DBCT Management and Building Stronger Communities Federal Government Funding.

Moving into the next year we are looking forward to increasing the community awareness of the work SLCMA does and we are extremely excited to unveil our education precinct to the Sarina Community, once completed. SLCMA will continue to work on developing working relationships within the catchment and exploring new funding streams to secure our position in the community.

Nursery Officer's Report



Sandy Whittington Shaw

I have not been at SLCMA for the full year, but a lot has happened in the SLCMA Community Nursery, in the short time I have been here. Various infrastructure improvements have been, or are in the process of being completed. These include:

- new seed sorting bench
- 2 x mobile work benches
- removal of old shelving
- installation of the slimline garden shed
- moving the chemical cupboard
- Installation of flashing to join the undercover area to the APEX shed to better waterproof the undercover area
- construction of the soil/sand bays.

All of these improvements look great and will provide a very comfortable, efficient workplace for our awesome team of volunteers and staff.

The Wetlands treatment train is another exciting addition. We are currently propagating wetland species to use in it, and will continue to stock wetland plants for outside orders as well. The old bath tub will be given a new home and put to use for this purpose.

I have enjoyed reviewing and implementing changes to the operational activities within the nursery to ensure we are producing the best quality native plants for the local and regional community.

Throughout the year, the SLCMA Community Nursery has been able to provide a large number of native plants to project partners, local businesses and landholders, for local and regional rehabilitation projects. I look forward to continuing to be able to provide local native plants for these and new projects, into the future.

I would also like to take this opportunity to thank the SLCMA Community Volunteer team, staff and management committee who have welcomed me into the SLCMA team. And, thank the SLCMA Community Volunteers for their ongoing support toward the SLCMA Community Nursery.

2015/16 Management Committee Members and Staff

Management Committee Members:

Chair	Gloria Murray
Vice Chair	Greg Melvin
Treasurer	Jen Price
Secretary	Jen Mitchell
Executive	Theresa Morgan

Staff:

Coordinator	Lara Mathewson (from Jan 2016)
Administration Officer	Nadine Hamill
Technical Officer	Saskia von Fahland
Nursery Manager	Lynette Keir (to June 2016) Sandy Whittington Shaw (from June

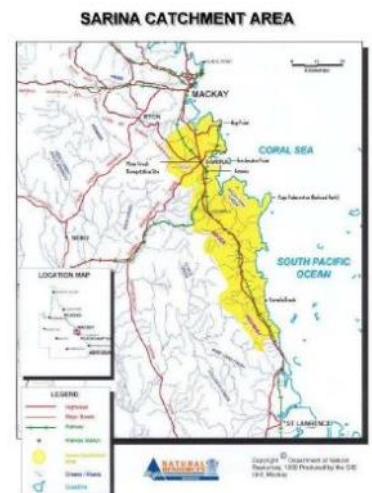


SLCMA Management Committee: L-R: Greg Melvin, Jen Price, Jen Mitchell. Gloria Murray. Absent: Theresa Morgan

Organisational Objectives

The objectives of Sarina Landcare Catchment Management Association Incorporated are:

- To promote a strategic and integrated approach to natural resource management and biodiversity conservation in the Sarina Catchment area.
- To foster coordination and cooperation between land managers, community groups, industry and government agencies in their natural resource management activities.
- To promote understanding and awareness of the interactions and relationships between the natural systems and resources of the catchment.
- To identify and prioritise natural resource management issues within the Sarina Catchment Area.
- To prepare, coordinate and implement priority action plans identified in the Sarina ICM Strategy.
- To promote sustainable solutions and actions through strong community,



SLCMA's Vision and Goals

Vision for the Sarina Catchment

The Sarina Catchment Area is an economically viable region, which is ecologically sustainable and well regarded as a healthy place to live and work

Goals

- Land Use Planning:** The land resources of the Catchment are managed in an ecologically sustainable manner.
- Land Management:** The most appropriate ecologically and economically sustainable land management practices are adopted throughout the catchment.
- River/Creek Management:** The creek systems are managed in such a way as to enhance and maintain their natural values while providing for the needs of the catchment community.
- Water Management:** The integrity of the natural systems within the catchment are enhanced and maintained while providing water of a suitable quality and quantity to meet the needs of the community.
- Coastal Management:** Management of the coastal area in a way that will ensure the sustainable use of the natural resources
- Vegetation/Biodiversity:** The native vegetation and biodiversity values of the catchment are enhanced and maintained and the natural systems are not further degraded.
- Community Awareness and Involvement:** A community that is aware of the need to maintain and improve the natural resources of the catchment and is actively involved in doing so.

SLCMA Membership benefits!



A membership with SLCMA has many rewards:

- ◇ Easy access to Natural Resource Management information and extension
- ◇ Monthly newsletter, meeting minutes, progress and project reports
- ◇ A vote on issues in your catchment
- ◇ A say in the types of projects applied for
- ◇ Up to 10 free local native seedlings from the SLCMA Community Nursery each year
- ◇ Invitations to Natural Resource Management bus tours, field days and workshops

SLCMA Membership 2015/16

Class of Membership	Is membership of the class to be limited or unlimited in number?	If the class of membership is to be limited in number, how?	Limitations relating to the class of membership	Entry requirements for class of membership	Number of members
Government Organisation Member	Unlimited	N/A	1. Full voting rights	Open to nominated Councillors of local authorities within the Association's catchment area, and nominated officers of State Government departments or authorities, or divisions or branches within them.	16
Associate Member	Unlimited	N/A	1. Full voting rights	Shall be opened to nominees of: Companies and Cooperatives carrying out activities within the Catchment area. Local organizations and institutions. Local groups with a direct interest in land use	40
Ordinary Landcare Member	Unlimited	N/A	1. Open to any adult owners or occupiers of land 2. Full voting rights	1. Must be over 18 years of age 2. Annual fee for membership, the amount to be decided at an annual general meeting	213
Junior Member	Limited	There are to be no more than 50 Junior members at any time	1. May not vote 2. Not eligible for election to management committee positions	1. Must be under 18 years of age 2. Must be a registered Junior Landcare member.	27

Communication & publications

- **SLCMA Catchment News** is distributed monthly to approximately 300 recipients. The newsletter is a great way for members to keep up-to-date with available funding, workshops, field days, volunteer opportunities and the latest in natural resource management news.
- **[SLCMA website](#) and [facebook page](#)** are a great way for the community and members to keep up-to-date with what is happening in our catchment.
- **SLCMA Calendar 2016** was well received by members, schools and volunteers. It is a great opportunity to showcase places of interest and critters from around the catchment. It also includes important dates such as meetings, environmental awareness events and cattle sales. *Thankyou to Mackay Regional Council, Dalrymple Bay Coal Terminal PTY LTD and Dalrymple Bay Coal Terminal Management for their contribution towards the printing costs.*
- **SLCMA General meetings** were held bimonthly throughout the year. The meetings are an opportunity for members and the community to discuss and learn more about Landcare related topics, local issues and solutions.

Thankyou to our guest speakers throughout the year including:

- Deb McLucas (Freckle Farm / Greater Whitsunday food Network) - benefits of local produce and introduction to farmers markets.
- Peter Basso (North QLD Wildlife Management Consultant) - wildlife rescue & management of fauna during land clearing, including a range of wildlife from taipans and crocodiles to sugar gliders, frogs and kingfishers.



SLCMA Community Nursery

The SLCMA Community Nursery is an essential part of our organisation which is utilised as a training facility and base for the SLCMA volunteer program and allows for the propagation of local native plants for local and regional rehabilitation projects, revegetation, gardens and landscaping.

With funding from DBCT PTY LTD and DBCT Management as well as support from, Australian Government Building stronger Communities, members and volunteers we have continued to make improvements to the community nursery facility throughout the year. The improvements have largely been based around work place ergonomics and nursery hygiene and optimisation. The improvements / upgrades included:

- Installation of a seed cleaning stainless steel work bench,
- Installation of two stainless steel work station for potting on works
- Installation of a soil holding bay
- Installation of a slim line storage shed.

We have had many visitors to the nursery throughout the year, including Member for Capricornia Michelle Landry MP, all of whom have provided positive feedback about the facility and are impressed with the opportunities it provides for the Sarina community, both socially and environmentally.



L-R: Nadine Hamill, Michelle Landry MP



Image: M Meng

Program & project updates:

Land for Wildlife Program



The Land for Wildlife program is a voluntary program that recognises landholders who are making a significant effort to encourage and provide habitat for wildlife on their properties. This is achieved by conserving and actively managing habitat as well as integrating nature conservation with other land uses such as agriculture, grazing or tourism.

Landholders participating in the program, receive a number of benefits including; 20 free native plants per year, land management advice and links to resources, re-visits to registered properties, invitations to field days and workshops, quarterly regional newsletter.

The Land for Wildlife program is delivered within the Mackay Regional Council boundaries of the Sarina Catchment by SLCMA and the Pioneer Catchment by Pioneer Catchment and Landcare Group (PCL); on behalf of the Mackay Regional Council Natural Environment Program. This coordinated approach provides consistency across the region and beneficial linkages to other complimentary projects and programs.

SLCMA Community Volunteer Program

The SLCMA Community Volunteer Program has continued to grow in number and demographic. Our volunteers are so committed and go above and beyond. They have been working tirelessly in the Sarina Community Native Gardens and working (sometimes in their own time beyond the volunteer program) to support the SLCMA Community nursery. They deserve all the credibility for the success of the SLCMA Community Nursery and for the management of our native gardens.

Throughout the year, the volunteers have enjoyed a variety of activities from plant identification and seed collection field trips, seed cleaning, preparation and propagation.

The SLCMA Community Volunteer program operates every Wednesday, 9am to 12noon. And continues to be a great opportunity for volunteers to meet new people and learn about native plants and their propagation. The SLCMA Community Volunteer Program receives much appreciated support from the Mackay Regional Council, Natural Environment Levy.

The SLCMA community volunteer program operates in accordance with Volunteering Australia's National Standards for Volunteer Involvement.



Above: Volunteers seed collecting

Below: Volunteers participating in a coastal planting activity

Sarina Community Native Gardens

Site of the Sarina Community Native Gardens
(2008)

In 2009 we began the journey of transforming an area of lawn adjacent to the SLCMA Office, into the Sarina Community Native Gardens. The purpose of the gardens is to demonstrate and promote the use of native plant in gardens and landscaping situations as well as provide an educational opportunity for locals & visitors to learn about local native plants, their benefits & uses in various situations.



Expansion of the wetland (2015)

The establishment of the Sarina Community Native Gardens is well under way with many of the plants flowering and fruiting and providing habitat to a variety of native birds and other wildlife. Over the last six years, we



Volunteers Planting Whitsunday
Bottle Trees for National Tree Day

have met many milestones and achievements including the installation of a seasonal wetland, walking track, boardwalk and themed gardens including the sensory gardens and local habitats. A highlight was the official opening in 2013 by gardening guru, Costa Georgiadis.



The last year has been no different, with ongoing maintenance and improvements being undertaken by SLCMA and community volunteers. Maintenance proved difficult at times during 2016 due to periods of wet.

SLCMA will continue to work with Mackay Regional Council, Mackay Regional Botanic Gardens and Society for Growing Australian Plants to identify suitable plant species and groupings for additional plantings. SLCMA would like to thank Mackay Regional Council Natural Environment Program for providing financial support for the current stage of the project.

Grendon Creek Diversion revegetation project

A revegetation program along the new Grendon Creek Diversion Channel constructed inside the Dalrymple Bay Coal Terminal (DBCT) rail balloon loop was undertaken in late 2015 with maintenance works completed in 2016. The construction of the new rail loop dam project by Golding Contractors meant that an existing section of the old Grendon Creek alignment (that falls within the rail loop) has been relocated outside of the new dam footprint. A SLCMA revegetation team was formed to plant a total of 3000 native tube stock plants. Planting commenced on October 21st and was completed on October 30th 2015. The native plants were planted out, fertilised, watered and protected by tree guards and jute matting. Planting this number of tubestock in a short space of time was a substantial effort. All plants were supplied by the SLCMA community nursery.

An additional area at Dalrymple Coal Terminal (ID spillway) was revegetated in 2016. Both these planting jobs have been a significant financial support to SLCMA in the 2015 / 2016 period.



Coordinated Feral Pig Control Program

SLCMA has continued to work alongside project partners: Mackay Regional Council, Reef Catchments, Plane Creek Productivity Services and, landholders this year to help coordinate a feral pig control program throughout Rocky Dam Creek and Carmila Catchments

Overall, 58 landholders participated in the annual aerial control event in December 2015 which resulted in 58 pigs controlled and 6 dogs controlled.

It is great that landholders are working together and recognise that a pig controlled a few kms away is still of benefit to them and their property. The coordinated approach allows for a large area of the catchment to be covered in a short space of time, increasing the potential to reduce feral pig numbers and hence reduce negative impacts on farming land and natural areas.



The Feral Pig Control Program is part of a collaborative approach between landholders and project partners using a variety of control methods at different times of the year. As well as the aerial control events, the program has involved meetings with landholders, workshops on trapping, surveys, loaning of pig traps.

Participation, funding and in-kind support from landholders and project partners is integral to the success of the program.



Carmila Beach Weed Control

A weed control project has been conducted at Carmila Beach Reserve throughout the year. The project was aimed at controlling invasive weeds to conserve and preserve the natural values of the area. Carmila Beach contains mapped remnant vegetation including two endangered and one of concern ecosystems. The area provides essential habitat for the Northern Quoll and a number of other listed species.

Cats Claw Creeper Control–NLP

Cats Claw Creeper (CCC) project funded through the National Landcare Program was conducted in 2016. The project included treatment works of local Catc Claw Creeper (CCC) infestations in the Plane Creek area and a treatment and identification demonstration to raise public awareness.

CCC is a vigorous, perennial woody vine that invades warm, moist native forests and riparian zones, killing native trees and understory plants. It spreads readily from seed, carried by water or wind. It also spreads from gardens as a result of human propagation and rubbish dumping. Regrowth can occur from persistent underground tubers. Within the Sarina Catchment, there are known infestations along Plane creek and a hotspot within the Sarina township. Cats Claw Creeper (*Dolichandra unguis-cati*) is listed as a weed of National significance.



Alf Vary from Ranges to Reef, demonstrating control of CCC

Reef Out The Rubbish



SLCMA were engaged by Reef Catchments in partnership with Isaac Regional council to deliver four Reef out the Rubbish events in 2016. The events were held at Carmila Beach and Clairview. Rubbish collected ranged from discarded camping items and general litter to fishing paraphernalia and broken fencing. Carmila Beach is identified as a potential nesting site and intertidal roost for local and migratory shorebirds. As such participants were treated to a presentation on Flat Back Turtles from Fay Griffiths of Mackay and District Turtle Watch Association.

Bendigo Bank–Sustainable Food Garden

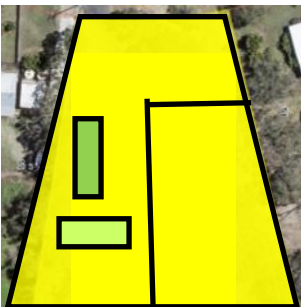
Sarina Community Bendigo Bank has funded the production of a sustainable food garden at SLCMA. Work has commenced on establishing the garden beds for this project. SLCMA are extremely fortunate to have had 10 participants in the "Skilling Queenslanders for work" project construct the garden beds. SLCMA are very excited to have a sustainable food garden available as part of our education precinct and as an additional area of focus for our volunteer program. The garden will be used to educate schools and the general public about the environmental value of sustainable food production.



Building Resilience of Natural Areas and Sustainable Land Management on Small Properties

SLCMA is currently delivering year 3 of 3, of the project *Building Resilience of Natural Areas and Sustainable Land Management on Small Properties* within the Mackay Whitsunday Region. The project is being delivered in partnership with the Central Queensland Coast Landcare Network focusing on building resilience within the landscape, focusing on peri-urban (rural) hotspots throughout the Sarina, Mackay and Whitsunday Regions.

The project provides support and advice to landholders to make practical changes in land management practices that will help improve the health and resilience of your property and surrounding environment. Participating landholders receive a free property visit, personalised action plan, access to resources, technical advice and 40 free native plants for rehabilitation activities.



Property planning

To date, the project has supported 150 landholders with properties (ranging in size between 2 and 50 acres) and provided 6 landholder training days across the region. The *Building Resilience of Natural Areas and Sustainable Land Management on Small Properties within the Mackay Whitsunday Region* is funded by the Queensland Government's Everyone's Environment Grants.



Weed control training day

Dalrymple Bay Coal Terminal Pty Ltd



Native Bee hive installed at SLCMA

Funding under the Dalrymple Bay Coal Terminal 2015/2016 Community Sponsorship program has enabled two projects to commence. Those being Nursery optimisation upgrades and Community Engagement Events. The Nursery Optimisation upgrades have enabled the purchase of new ergonomic potting benches, a soil holding bay, along with a slim line storage shed, yet to come are additional sun hardening benches.

The Community Engagement Events Funding has enabled the purchase of a native bee hive including bees and will enable an event to be hosted where Native bees are the focus. The second community engagement event sponsored

by DBCT PTY is holding an event focused on sustainable gardening.



Volunteers utilizing the new work benches

Australian Government Stronger Communities Program

The Australian Government Department of Infrastructure and Regional Development—Stronger communities funding has enabled the purchase of a purpose built workbench along with anti-fatigue matting and a defibrillator for the nursery. SLCMA has contributed a portion of in-kind work and funding towards the project (which is a requirement of the programme). We would also like to thank Graham's Engineering for their portion of in-kind support in the installation of the workbench.



Other projects and grants

- **Sarina Landcare Support Project** funding from Mackay Regional Council—Natural Environment Program. This annual project supports SLCMA to provide ongoing services to landholders and the general community through activities such as the SLCMA Community Volunteer Program, environmental awareness events, displays at local events, working with stakeholders, coordination of projects and workshops.
- **Rio Tinto** funding from Rio Tinto Hail Creek Mine Community Development Fund, has enabled the commencement of converting Mt Funnel model into an educational display structure, the structure will be used to demonstrate soil development and soil health in a catchment.
- **Isaac Regional Council**, funding from Isaac Regional Council enabled the control of Lantana along Carmila Beach foreshore.
- **Department of Agriculture and Fisheries**, funding from DAF has enabled the construction of a wetlands treatment train to commence, the treatment train will form part of the "educational precinct" at SLCMA.

Supporting Community Events

- **QLD Day Celebrations:** SLCMA was present at the QLD day celebrations held at the field of dreams, We received many enquiries from Landholders regarding our projects, plant identification and weed control.
- **Sarina Festival:** We waved the Landcare flag at the Sarina festival, engaging with local residents and selling stock from the community nursery.
- **Grazing Forum:** SLCMA had the pleasure of partnering with Pioneer Catchment & Landcare Group in a joint Landcare display at the Grazing Forum, providing advice to landholders on suitable native species and weed control.
- **Coast Care :** SLCMA offered support to the Sarina Beach Progress Association and partnered with Reef Catchments and MRC to deliver a coast care event at Sarina Beach.
- **Plane Creek Productivity Services Field Day:** SLCMA in conjunction with MRC pest officer attended the Plane Creek Productivity Services field day held at the Koumala gymkhana grounds. Many landholder enquiries were received about the aerial feral pig shoot and the issue of wild dogs.
- **Great Northern Clean Up:** SLCMA supervised a site at Freshwater point and 16 participants for the Great Northern Clean up in 2016.



SLCMA display at the Sarina Festival



Great Northern Clean up volunteers!

Supporting our local schools

SLCMA continues to provide support to our local schools, offering technical advice and plants for onground projects as well as assisting teachers and students with resources and information.

SLCMA has received funding from Mackay Regional Council, Natural Environment Program through the *Landcare Support Project* which gives SLCMA the foundation to provide 10 days support to local schools per year.

Some highlights of the year include:

- Sarina State High School: planting activities, water studies at Plane Creek and Middle Creek Dam
- Swayneville Primary School: Judging Sunflower growing competition and provision of prizes
- Lee St Kindy: Planning and planting with students for Schools Tree Day
- Alligator Creek School: Reveg area weed identification and native plant identification, provision of LFW information, plant propagation for under 8's day
- Kids College Sarina: Plant identification and wildlife carer information
- C&K Hoey Street: presentation of Ecology Talks
- Sarina Primary School: provision of information for potential environmental based activities
- Sarina Kindy: Provision of native s and planting advice
- Loaning of school resource kits: Macro-invertebrate identification, "River Story" (catchment management) and water quality sampling kits have been well utilised throughout the year by local schools.



Working Groups supported

SLCMA is proud to support the following working groups:

- Central QLD Coast Landcare Network
- Mackay Whitsunday Regional Pest Management Group
- Mackay Regional Council — Natural Advisory Committee
- Rocky Dam Creek Coordinated Feral Pig Working Group
- Healthy Rivers to Reef Partnership
- Wetlands Working Group
- Greater Whitsunday Food Network
- Great Barrier Reef Marine Park Authority
- Great Barrier Reef Task Force



SLCMA is supported by:



This project was funded by the Queensland Government's Everyone's Environment grants program.

