

Annual Report 2010/2011



September 2011

Inside this issue:

Chairman's Annual Report	1
Regional Landcare Facilitator Report	2
Project Officer Report	2,3
SLCMA: • Organisational objectives • Vision and Goals • Membership Benefits	3
Membership 10/11	4
Supporting our local schools	4
Program & project updates: • SLCMA community volunteer program • SLCMA community nursery • National Green Jobs Corps • Sarina Community Coastcare • Monitoring & remediation of blue green algae outbreaks in coastal aquatic ecosystems • Sarina community native garden • African Tulip Tree Trial Project	5 To 7
Communication & publications	7
Supporting community events	8
Working Groups Supported	8
Conferences, workshops & courses	8

Chairman's Annual Report

Thank you for the opportunity of presenting the 2010-2011 annual report for Sarina Landcare Catchment Management Association. This year has been much better than we feared it might be. There were major changes to funding and this time last year our future was some what uncertain. We are now looking outside our previous narrow range of funding and we are on a better footing to enable us to progress our ambitions'.



Nick Kenyon, National Tree day

As in previous years we have produced our Calender. This has been extremely successful in promoting our activities and I recommend that you forward it to any of your friends as a vehicle promote our activities.

We have been successful on several occasions in obtaining the services of the National Green Jobs Team for continued on ground works in out catchment area. It is great that we have the services for maintenance as well as new works. My thanks to our staff for the continuing support of these teams.

Some of the hardest workers are our Community Volunteers. This dedicated work-force amazes me with the effort the put in each and every Wednesday morning. Nursery work, seed collecting, planting and other related things too many to list. Thank you all.

The Community Native Garden located beside the office in Sarina; regardless of the first dry then extremely wet weather is progressing particularly well. This project has had several working bees and is well on its way.

We are working well with Mackay Regional Council and BMA in several projects and I welcome their attitude in wishing to be better corporate citizens and looking outside their core principles. If all enterprises had their attitudes we will have a sustainable region.

As in previous years we have interacted with Sarina State both High and Primary, St Anne's, Alligator Creek Schools and the Agricultural Department of the High School. These have included a native garden, water quality and ecology, environmentally sustainability activities to name a few.

Two undertakings that have taken many hours of effort are the Blue-Green Algae Project and the African Tulip Project. The Blue-Green Algae Project is to all intents completed with results to be available shortly. The African Tulip Project is ongoing with some results in the near future. The loss of one unit from the Blue-Green Algae project was distressing.

If you wish to know about weeds than Margaret and Saskia are well placed to provide you with answers, after attending the Brisbane Weed Walkabout. However please place your specimen in a clear plastic zip lock bag, this prevents unnecessary contamination.

I would like to thank the 18 members of the Gumnut Team from the Relay for Life held at the Sarina Showgrounds. Fun does not always triumph over effort and lack of sleep.

We now come to the most difficult section of my report. I have thoroughly enjoyed my 10 years associated with Landcare. It is a vastly different organisation from when I joined. There have been difficulties and stress full periods when I despaired and thought "What am I doing, is it worth it?" Nevertheless I am pleased I continued and consider that it is a better organisation for my having been here. However I believe that it is time I lowered my profile in the organisation and removed myself from the Executive where I have been a member since I joined. I will remain a member but in a less active role, so you can't relax just yet.

I would like to thank all the Staff, all the Executive members and volunteers for their support over the year and wish you well in the future.

Chair, Nick Kenyon, September 2011

Regional Landcare Facilitator Report

It has been a busy year once again! It is great to see that SLCMA has continued to receive support from our project partners such as Mackay Regional Council, BMA Community Partnerships Program, to name a few ~ your support has provided SLCMA with the capacity to deliver a wide range of projects and programs and continue to engage with the Sarina Community (landholders, schools, project partners, volunteers, stakeholders, other community groups and organisations).



Saskia von Fahland at Middle Ck dam

The 2010/2011 year has brought some changes to SLCMA, with the my position becoming funded through Reef Catchments (RC), the Regional NRM body for the Mackay Whitsunday Region and the Australian Government, through the Regional Landcare Facilitator Program. The Regional Landcare Facilitator Position is split 1/3 Regional Landcare Facilitator, 2/3 SLCMA and Reef Catchments support. This arrangement is similar across the other two Landcare Groups within the region.

The QLD Weed Symposium "Back to Basics" was hosted by the Mackay Regional Pest Management Group in Mackay this year. This was a great opportunity for SLCMA and Mackay Regional Council to showcase Sarina projects on one of the field trips. The Sarina Field Trip (proudly sponsored by North QLD Bulk Ports), saw 45 delegates visit a variety of sites: Port of Hay Point Quarantine Waste Facility, Environmental Management of Port of Hay Point, Louisa Creek Community Rehabilitation Site, Sarina Sugar Shed, Hymenachne control & Blue-Green Algae remediation at Middle Creek Dam and "youth and innovation" at the Sarina Rural Skills Centre.

It has been an exciting time for the SLCMA Community Volunteers this year, with the expansion of the SLCMA Community Nursery. The nursery was built in 2003 and this is the first renovation it has seen. SLCMA received support from Dalrymple Bay Coal Terminal Management, which has allowed the construction of a 6x6m awning, providing a covered weather proof area for our volunteers. Further work is planned including, expanding the site to incorporate a few more benches and a more effective, efficient irrigation system.

A big focus for SLCMA is providing support to our local landholders, particularly (but not limited to) the smaller properties who traditionally receive limited support and access to essential natural resource management information and resources. It is a pleasure to visit properties and be able to assist with a range of land management topics including plant identification, pest management, rehabilitation, stock management, property planning etc.

A big thankyou to all of our volunteers; Management Committee Members, Nursery Volunteers and Landcare members ~ for the time you dedicate toward Landcare activities and the support you give to SLCMA. Once again it has been great working alongside the other SLCMA staff, Nadine and Margaret.

~ THANKYOU ~

Project Officer's Report

I have been in the position of Project Officer for over a year now and am pleased to present my first annual report. It has been an extremely exciting and eventful year with considerable achievements accomplished on many of the new and existing SLCMA projects. Working alongside SLCMA's Community Nursery volunteers and assisting with the wide range of support SLCMA provides to Sarina's residents and its surrounding community has been a highlight of my first year of employment.



Margaret Meng at SSHS sediment basin

The 'Monitoring and Remediation of Blue-Green Algae Outbreaks in Coastal Aquatic Ecosystems' based at Middle Creek Dam has reached completion. This innovative research project utilised floating aquaponic units to support native vegetation which absorb extra nutrients from the water that influence blue-green algae outbreaks. Water quality monitoring, plant nutrient uptake and sediment analysis and community workshops were all undertaken during the course of the project.

For those of you who regularly drive along Beach Road, you will be aware the construction of the Sarina Community Native Community Gardens is well underway. Our current National Green Jobs Corp team have been an integral part of the project doing on ground preparation of garden beds and maintenance work assisted by Sarina State High School students. Volunteers from the Sarina community have also played a major role in planting local native species within the gardens. The primary purpose of the gardens is to educate and demonstrate the use of native species in urban gardens.

The African Tulip Tree Pilot Project has continued over the previous year and is in its final stages. Over the past twelve months locations of this declared plant within the Sarina Catchment were recorded and mapped with suitable trial control sites identified. Control using various chemical methods has been undertaken. Signs identifying these sites have been erected and monitoring will continue until the projects completion in December 2011. This project has strengthened many SLCMA partnerships with private landowners, QR National and state and local government departments.

The Healthy Waterways program continues to provide a wealth of data through ambient monitoring, unfortunately our dedicated healthy waterways volunteers, Gail and Neil Bradley have decided it is time to hand over the ropes to new volunteers. Their long term commitment to the program has provided many hours of volunteering and considerable local knowledge of Plane Creek. We are in the process of training a new volunteer, Katrina Hurst and would like to welcome her into the SLCMA volunteer network.

Assisting with the Peri-urban and Land for Wildlife Projects, has helped with creating strong relationships with property owners in the catchment and identifying local land management issues. **Continued on next page.....**

Project Officer's Annual Report continued.. The program has been successful assisting property owners (and myself) with plant and weed identification, and implementation of best land management practices within the catchment.

I have enjoyed working with Sarina State High School agriculture department throughout the year and we have developed associations with the Science department providing assistance with field trips, conducting water quality monitoring and macro invertebrate identification. I have also enjoyed working with local primary school staff and students assisting with education of the importance of native plants for biodiversity and to establish native gardens within local primary school grounds.

I am looking forward to continuing to work with SLCMA staff and volunteers and assisting the community of the Sarina catchment well into the future.

Margaret Meng, Project Officer



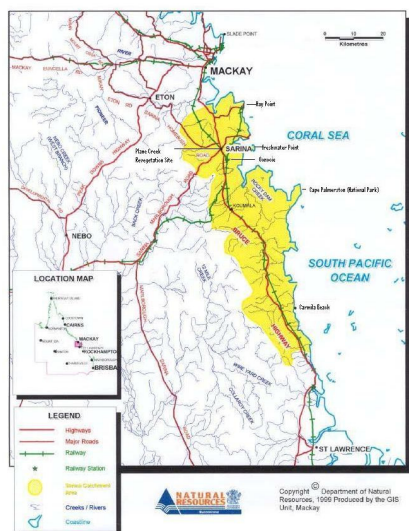
Stuart, Jeane, Margaret (3), Margaret (2), Marjorie with our new SLCMA Member signs

Organisational Objectives

The objectives of Sarina Landcare Catchment Management Association Incorporated are:

- To promote a strategic and integrated approach to natural resource management and biodiversity conservation in the Sarina Catchment area.
- To foster coordination and cooperation between land managers, community groups, industry and government agencies in their natural resource management activities.
- To promote understanding and awareness of the interactions and relationships between the natural systems and resources of the catchment.
- To identify and prioritise natural resource management issues within the Sarina Catchment Area.
- To prepare, coordinate and implement priority action plans identified in the Sarina ICM Strategy.
- To promote sustainable solutions and actions through strong community, industry and government partnerships in catchment management strategies.
- To provide a forum for community and government discussion on natural resource and catchment management issues.

SARINA CATCHMENT AREA



SLCMA's Vision and Goals

Vision for the Sarina Catchment

The Sarina Catchment Area is an economically viable region, which is ecologically sustainable and well regarded as a healthy place to live and work

Goals

Land Use Planning: The land resources of the Catchment are managed in an ecologically sustainable manner.

Land Management: The most appropriate ecologically and economically sustainable land management practices are adopted throughout the catchment.

River/Creek Management: The creek systems are managed in such a way as to enhance and maintain their natural values while providing for the needs of the catchment community.

Water Management: The integrity of the natural systems within the catchment are enhanced and maintained while providing water of a suitable quality and quantity to meet the needs of the community.

Coastal Management: Management of the coastal area in a way that will ensure the sustainable use of the natural resources

Vegetation/Biodiversity: The native vegetation and biodiversity values of the catchment are enhanced and maintained and the natural systems are not further degraded.

Community Awareness and Involvement: A community that is aware of the need to maintain and improve the natural resources of the catchment and is actively involved in doing so.

SLCMA Membership benefits!

A membership with SLCMA has many rewards:



Landholders at Healthy Soil Workshop

- ◇ Easy access to Natural Resource Management information and extension
- ◇ Monthly newsletter, meeting minutes, progress and project reports
- ◇ A vote on issues in your catchment
- ◇ A say in the types of projects applied for
- ◇ Up to 20 free local native seedlings from the SLCMA Community Nursery each year
- ◇ Invitations to Natural Resource Management bus tours, field days and workshops
- ◇ Copy of the SLCMA Annual Report

SLCMA Membership 10/11

Class of Membership	Is membership of the class to be limited or unlimited in number?	If the class of membership is to be limited in number, how?	Limitations relating to the class of membership	Entry requirements for class of membership	09/10 membership (Number of members)
Government Organisation Member	Unlimited	N/A	1. Full voting rights	Open to nominated Councillors of local authorities within the Association's catchment area, and nominated officers of State Government departments or authorities, or divisions or branches within them.	19
Associate Member	Unlimited	N/A	1. Full voting rights	Shall be opened to nominees of: Companies and Cooperatives carrying out activities within the Catchment area. Local organizations and institutions. Local groups with a direct interest in land use	18
Ordinary Landcare Member	Unlimited	N/A	1. Open to any adult owners or occupiers of land 2. Full voting rights	1. Must be over 18 years of age 2. Annual fee for membership, the amount to be decided at an annual general meeting	203
Junior Member	Limited	There are to be no more than 50 Junior members at any time	1. May not vote 2. Not eligible for election to management committee positions	1. Must be under 18 years of age 2. Must be a registered Junior Landcare member.	9

Supporting our local schools

SLCMA has had an active role in providing a range of support to schools and other youth groups throughout the year. This has been made possible through the support from Mackay Regional Council - Natural Environment Levy and Dalrymple Bay Coal Terminal Management. Some of the highlights include:

- **Sarina Primary school**— Provision of plants and assistance for School's National Tree day, received assistance from NGJC to prepare an old garden bed.
- **Swayneville Primary School**—Provision of plants and assistance for School's National Tree Day, received assistance from NGJC to prepare a garden bed.
- **St Annes Primary School**—Supporting students to become "agents of change" and transform an old garden bed into a native garden which demonstrates the transition between coastal, woodland, riparian and rainforest environments. This project has been a work in progress and also received support from NGJC.
- **Alligator Ck School**—Provision of plants and assistance for School's National Tree day, discussion on development of edible and native gardens.
- **Sarina State High School**— Water quality, catchment management activities at Plane Creek
- **SSHS Sarina Rural Skills Centre**—Installation of plants on aquaponic unit in sediment basin, macroinvertebrate sampling, water quality monitoring.

Sarina Catchment School's Program ~ Environmental Sustainability

Over 3 days, 280 students from Alligator Creek and St Annes Primary Schools came together at the SSHS Agricultural Department/Sarina Rural Skills Centre. All students participated in a variety of activities which aimed to create a greater understanding of, and provide practical ways to achieve environment sustainability. Activities included: Sustainable Farming (by SSHS), Sustainable Building Designs (by Design for Creation), Backyard biodiversity (by SLCMA), Compost bathtub worm farms (by Mackay Community Gardens) and Environmental Weeds (by Biosecurity QLD).

St Annes students removing weeds from garden



St Annes & Alligator Ck School: Activity Days



Program & project updates

SLCMA Community Volunteer Program



Some of our volunteers enjoying a seed collection and plant identification field trip

The SLCMA Community Volunteer Program provides an opportunity for community members to gain knowledge about our local native plants and gain skills in plant propagation and nursery activities.

Our team of enthusiastic volunteers contribute their time on a weekly basis and are an essential part of the success of the SLCMA Community Nursery—taking part in the whole process from plant identification and seed collection to seed cleaning, propagation and general nursery activities. The volunteer morning is certainly not complete without a good chat over morning tea.

Students from Sarina State High School have also been attending the mornings, as an opportunity to work alongside the volunteers and assist with Landcare activities.

Thank you to our volunteers for your presence, input and contribution towards our Landcare activities and to Mackay Regional Council, via the Natural Environment Program for your support towards the program.

SLCMA Community Nursery

The SLCMA Community Nursery is utilized as a training facility by a range of community members including volunteers, school students and National Green Jobs Corps participants, where they can learn about plant identification and propagation.

Through the support from Dalrymple Bay Coal Terminal Management we have begun the first renovations to the nursery since its construction in 2003. To date, a 6x6m awning has been installed, providing a much needed weatherproof shelter for volunteers and visitors. Further work is planned including extending the area of the nursery, installing more sun-hardening benches and an upgraded watering system. The renovations will provide a more enjoyable experience for our volunteers, provide the opportunity to invite more school groups to the facility, as well as allow for the propagation and storage of more plants.



New awning installed at the SLCMA Community Nursery

With the assistance of our volunteers, the nursery has produced approximately 5500 native plants throughout the year, which have been utilized for community projects, schools plantings, Environmental Awareness Days and Landcare Member plant allocations (*up to 20 free native plants per member per year*). SLCMA is continuing to sell plants at the local Sarina markets, with the funds raised, put back, to support the running costs of the nursery.

Thank you to the Landholders who have given us permission to collect seed on their property and to some of you who have brought seed in throughout the year—this has allowed SLCMA to build our seedbank and an opportunity to propagate a diverse range of plant species.

National Green Jobs Corps Program

Thanks to the support of Conservation Volunteers Australia, SLCMA has been successful in hosting ongoing National Green Jobs Corps (NGJC) teams since March 2010. Since this time, the part-time teams have assisted SLCMA and our project partners in a range of community projects.

The participants have undertaken weed control and revegetation activities at some of Sarina's local beaches; Armstrong, Sarina, Salonika Beaches and Louisa Creek Reserve. Team Leader, Jude Wood and the participants have been working with many local schools with construction of garden beds, mulching and weeding at St Annes, Sarina and Swaynsville Primary Schools. The team have continued with ongoing maintenance of Hoey Street and Apex Park planting sites and have been working within the Sarina Community Native Gardens. The DBCT bund wall revegetation project was a major project for the team in recent months with over 1300 trees planted.

The part-time teams spend 2 days/week in the field gaining on-ground practical experience in natural area restoration, weed management and nursery work and, spend 1 day a week at TAFE gaining accreditation training towards Certificate 2 in Land Conservation.

The NGJC Program is an Australian Government environmental training program for young people, aged 17 to 24 years. The program aims to provide participants with a combination of work experience, skill development and accredited training to ensure they are ready for employment in emerging green and climate change industries.



NGJC proud of their planting

Sarina Community Coastcare

SLCMA was successful in receiving support through the BHP Billiton Mitsubishi Alliance—Community Partnerships Program to deliver the 3 year, *Sarina Community Coastcare* program. This program builds off the previous 3 year project *Sarina Coastal Sustainable Landscapes* Program and aims to raise community awareness about the importance and sensitivity of our coastal environments as well as encourage and facilitate onground rehabilitation projects to help protect and restore our foreshores.

SLCMA is working closely with Mackay Regional Council and Reef Catchments to ensure a strategic approach to coastal activities continues across the region. This is including reviewing the activities undertaken over the last 3 years under the *Sarina Shire Beaches Management Guidelines for Coastal Zones (August 2006)* and individual beach plans (April 2008).

With assistance from our National Green Jobs Corps teams, Conservation Volunteers Australia, Mackay Regional Council Sarina Beach team and local residents we have quite a few rehabilitation projects underway. Some achievements throughout the year include:

- Facilitation of community awareness raising events: Clean Up Australia Day, Great Northern Clean Up, Coastcare Week and displays at the Sarina markets
- Continuation of the Council Beach Team to undertake strategic onground activities such as weed control, revegetation
- Undertake annual coastal monitoring
- Community coastal demonstration projects at Louisa Creek Reserve, Armstrong, Hay Point beaches
- Residential coastal projects at Sarina & Salonika beaches



Community workshop

Monitoring & remediation of blue-Green algae outbreaks within coastal aquatic ecosystems

This innovative project was officially completed in April 2011. The project utilised native vegetation on floating aquaponic units to limit available nutrients in Middle Ck Dam with the aim to reduce the potential for blue-green algae outbreaks.

Some aspects of the project included:

- ◇ Construction of seven floating aquaponic units by the Sarina State High School agricultural students at the Sarina Rural Skills Centre
- ◇ Installation and maintenance of the units at three sites on the dam and the SSHS sediment basin
- ◇ Monthly water quality monitoring, plant growth and biomass sampling to monitor the uptake of nutrients.
- ◇ Sediment sampling to analyse the physical and chemical properties of the dam's sediments
- ◇ Sampling and identification of algal species during blooms in April and May 2011
- ◇ Community workshops conducted in April, with guest speaker Professor Larelle Fabbro (CQ University) were held for the community and high school students
- ◇ Development of a working group with stakeholder groups and technical experts

Vegetation growing on the pontoons was direct seeded by the SLCMA volunteers and included native *Lophostemon*, *Melaleuca*, *Callistemon* and *Lomandra* species. *Crinum* species were added to the pontoons in late 2010 and early analysis suggested this species is quite efficient in nutrient uptake. Unfortunately, one of the pontoons containing our beloved *Crinums* went missing in action during a major flood event in March this year, dashing our hopes for further nutrient uptake analysis on this species.

The Sarina State High School Agricultural students installed a floating aquaponic unit in their sediment basin in late 2010 and water quality monitoring was carried out until the completion of the project. Vegetables growing on the pontoon and duckweed present in the sediment basin were included in the biomass sampling with the duckweed also proving to be efficient in removing excess nutrients.

Workshops were conducted in April at Middle Creek Dam by Larelle Fabbro of CQ University to educate local school students and landholders about:

- ◇ the importance of identifying an algal bloom
- ◇ the health risks of an algal bloom to both humans and animals and
- ◇ the effects of algal blooms on water quality of aquatic ecosystems.

While the dam did experience algal blooms over winter, preliminary results show the utilisation of the aquaponic units, particularly with *Crinum pedunculatum* and encouraging naturally occurring plants such as duckweed has the potential to reduce available nutrients within the water column. After discussions with the project working group future activities will include:

- ◇ Constructing and installing 6 more aquaponic units
- ◇ Engaging with adjacent landholders to undertake best management practices

A final technical report will be completed shortly. This project is funded through Australian Government Caring For Our Country, Community Action Grants program.

Sarina Community Native Garden



CVA team after a day in the gardens

On ground works in the Sarina Community Native Garden has progressed with construction of the seasonal wetland area and the sensory garden beds. Planting occurred in the wetland area during a community planting day in February and Conservation Volunteers Australia's Better Earth team assisted with the planting of the 'taste' sensory garden. Community volunteers participating in National Tree Day, begun planting the 'smell' and 'touch' sensory gardens.

Gardens to showcase native coastal plants and native plants suitable for screening plants have recently been constructed by the National Green Jobs Corp team who, along with, Sarina State High School students, continue with maintenance of the existing gardens through watering, weeding and mulching.

SLCMA is continuing to work with staff from Mackay Regional Council, Mackay Regional Botanic Gardens and volunteers from Society for Growing Australian Plants to continue to identify suitable plant species and groupings. Observing the site to see how the land reacts during wet & dry seasons has been ongoing and will continue through the coming months.

Work will continue in the gardens throughout the remainder of 2011 with mounding of further garden beds, mulching, installation of a walking track, maintenance and further planting in existing gardens and labelling of plant species.

Utilising the gardens as an educational resource for the community, volunteers and Sarina youth and encouraging and demonstrating the use of native plants in urban gardens is the main aim of the project. SLCMA received funding for this next stage of the project through the Mackay Regional Council—Natural Environment Program.

Margaret Meng with trial site signs

African Tulip Tree Pilot Project



The African Tulip Tree Pilot Project has involved two aspects; 1) mapping the extent of infestations within the Sarina Catchment, 2) trialling and monitoring the successfulness of various control methods.

The project began in November 2010, with awareness raising and media releases calling the community to advise SLCMA of known infestations within the Sarina area. Through this process, 161 African Tulip Tree locations were identified. The locations were then ground-truthed and information including GPS readings, size of infestation and stage of growth were collected. With this information and through in-kind assistance from Department of Employment, Economic Development and Innovation (DEEDI), a map highlighting known infestations was created.

Eight trial control sites, on private, local and state government land were identified according to environmental significance, suitability for various herbicides, ease of access and community awareness and participation. Trial controls began in late November 2010 and continued through early 2011 with in-kind support from Ray Greaves from Silviculture Operations and Jack Langdon from Mackay regional Council. Control methods being trialled (*as per DPI Fact sheet and Permit 7485*) include axe & stem injection and cut stump with Glyphosate and Tordon D/S and cut stump and basal barking of suckers with Access/Diesel. The trial sites continue to be monitored for re-growth, with some re-application of herbicides applied.

Community awareness raising has continued throughout the project, with project signs installed at each of the trial sites as well as newsletter articles and media releases. The project is due for completion in December 2011 and is funded through the Mackay Regional Council Natural Environment Program.

Other projects delivered

- **Land for Wildlife Program** (*funded by Mackay Regional Council—Natural Environment Program*)
- **African Tulip Pilot project** (*funded by Mackay Regional Council—Natural Environment Program*)
- **Administration support** (*Australian Government-Grants to voluntary Environment & Heritage Organisations*)
- **Peri-urban Land Management Support** (*Australian Government & Reef Catchments*)
- **Landholder support incentive project:** Upper Alligator Ck & Middle Ck Dam (*Australian Government Community Action Grants*)

Communication & publications

- **SLCMA Catchment News** (your local newsletter) is distributed monthly to approximately 250 members. The newsletter is a great way for land managers to keep up-to-date with available funding, workshops, field days, volunteer opportunities and the latest natural resource management news.
- **SLCMA Calendar 2011** was again a hit—showcasing some scenic spots throughout the Sarina Catchment. It also includes important dates such as general meetings, environmental awareness events and cattle sales.
- **SLCMA General meetings** are held monthly and, are an opportunity for members and the community to discuss and learn more about Landcare related topics, local issues and solutions. Thankyou to our guest speakers throughout the year including Tina Ball (QPWS—Quolls), Delma Clifton (CQU—Koalas) and John Ross (CRRS—Soil health).

Supporting Community Events

- **National Tree Day** - Volunteers assisted with planting in the Sarina Community Native Gardens
- **Coastcare Week**— Volunteer opportunities for onground works at various Sarina Beaches
- **Clean Up Australia Day** - SLCMA partnered with Conservation Volunteers Australia, Coalport Community Recreation Association and Mackay Regional Council to help collect 80kg of rubbish at Louisa Creek Reserve and foreshore. This event was supported by BMA-Community Partnerships program, NQBP, MRC.
- **Relay for Life** — SLCMA volunteers, staff & members once again joined the "Gum-nut" team to participate in the annual Sarina Relay for Life, a fundraising event for cancer research.
- **BSES Field Day** — SLCMA assisted Pioneer Catchment & Landcare Group (PCL), Whitsunday Catchment Landcare and the Mky Regional Pest Management Group with a display at the annual BSES Field day. It is always a great opportunity to chat with landholders & promote some of our projects & programs available.
- **Ecoexpo**—SLCMA joined PCL with a Landcare display at Queens park. The event is an opportunity to provide information to the community about sustainability and looking after the environment.
- **Sarina markets** — We have continued to waive the Landcare flag at the local markets each month, it is a great opportunity to chat with the community, encourage the use of native plants, provide information to landholders and highlight some of the projects and programs that are available.

2010/2011 Management Committee Members

Management Committee Members:

Chair	Nick Kenyon
Vice Chair	Duane Brown
Secretary	Ray Greaves
Treasurer	Cath Hutton
Other	Rod Mc Fadzen Roger Van Der Veen

Staff Members:

Regional Landcare Facilitator	Saskia von Fahland
Administration Officer	Nadine Hamill
Project Officer	Margaret Meng



L-R: Duane Brown, Cath Hutton

L-R: Nick Kenyon, Ray Greaves, Roger Van Der Veen, Rod McFadzen

SLCMA is represented on the following working groups/committees:

- Central QLD Coast Landcare Network
 - ◊ CQCLN Regional Website development project
- Mackay Whitsunday Regional Pest Management Group
 - ◊ Development of Regional Weed book
 - ◊ Sarina Field Trip for 2011 QLD Weed Symposium
- Mackay Regional Council — Natural Advisory Committee

- **QLD Landcare Conference, Celebrating 21 years of Landcare**, Caloundra
- **Weed Walk-about** (for the weedies!)
A 2 day field trip to EcoSciences Precinct, QLD Herbarium and Mt Coot-tha Botanic gardens. Organised by MRPMG.
- **Algae Symposium**, Brisbane
- **QLD Weed Symposium**, Mackay

Conferences, workshops & courses

SLCMA is supported by:

